



**THOMPSON  
RIVERS  
UNIVERSITY**

# TRU



**EduCanada**<sup>™</sup>  
A world of possibilities  
Un monde de possibilités

2025-26

**VIEWBOOK**  
INTERNATIONAL



**4,000+**   
INTERNATIONAL STUDENTS  
**100+** COUNTRIES & REGIONS


**1 MILLION** | **250 ACRE**  
**SQ FT OF LEARNING SPACE** AND  
  **40 ACRES**  
OF GREEN SPACE

**6** VARSITY **&** **2** CLUB  
**WOLFPACK** **TEAMS** **TEAMS**



SOCCER, BASKETBALL, VOLLEYBALL  
CHEERLEADING AND BASEBALL

**31**  
AVERAGE  
CLASS SIZE

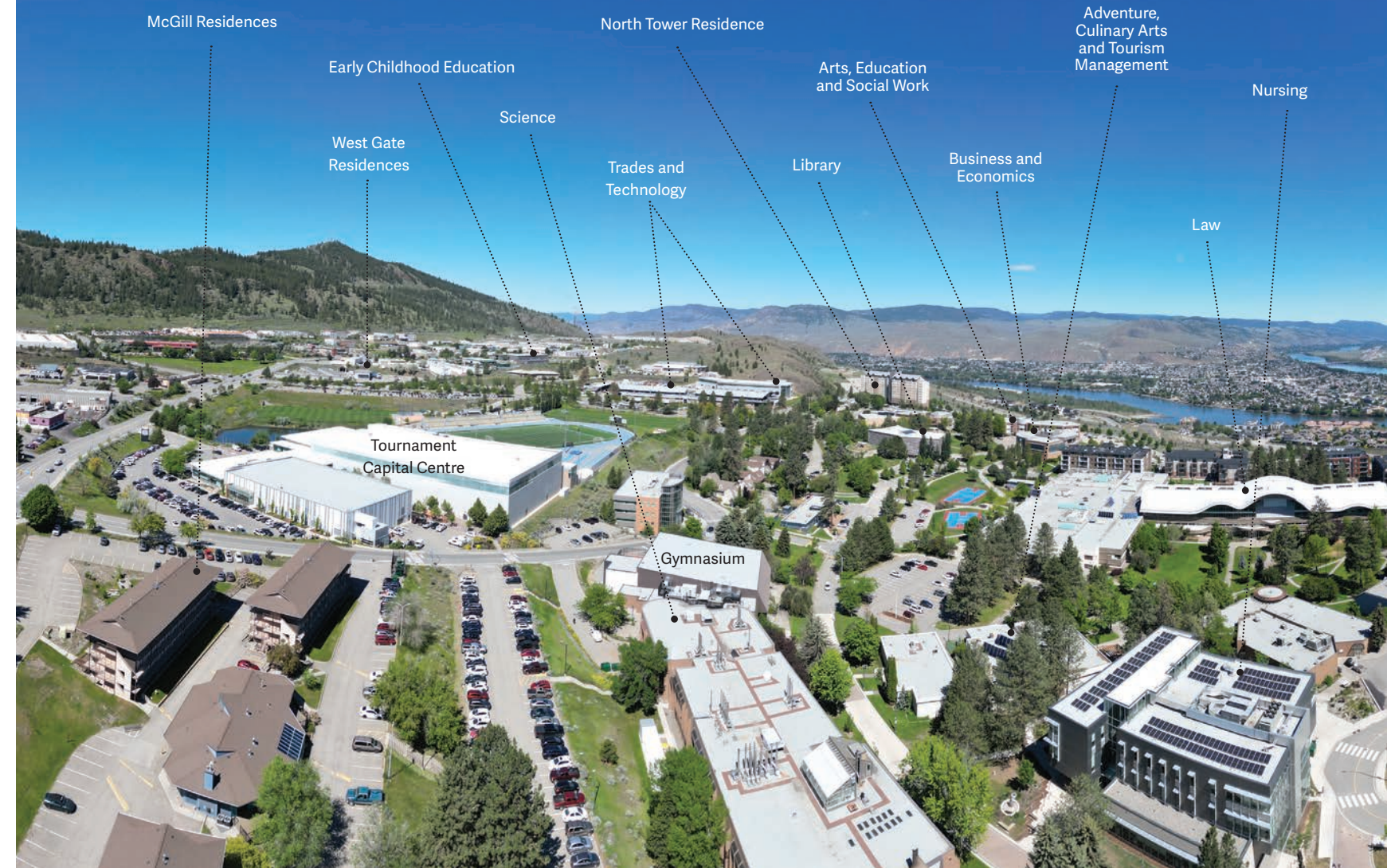
**9**   
FACULTIES  
AND  
SCHOOLS

**BUSES TO CAMPUS**  
**EVERY**  **15 MINUTES**

**UPass for students** provides free access to the Kamloops transit system and the Aquatic Centre.

    
OVER **80** STUDENT CLUBS  
ACADEMIC, ATHLETIC, ETHNIC, POLITICAL,  
RELIGIOUS, COMMON INTEREST

# WELCOME



TRU is in the  
 of **Kamloops**  
within walking distance of everything you need

TRU's Kamloops and Williams Lake campuses are located on the traditional lands of the Tk'emlúps te Secwépemc (Kamloops campus) and the T'exelc (Williams Lake campus) within Secwepemcúl'ecw. In Kamloops (from the Secwépemc word for "meeting of the waters"), the main campus overlooks the junction of the North Thompson and South Thompson Rivers, from which the university gets its name.

 Visit our YouTube channel for campus experience videos at [tru.ca/videos](https://tru.ca/videos)



# TRU. A CAMPUS UNLIKE ANY OTHER.

At Thompson Rivers University, we provide quality education and strive for excellence while ensuring our students get the support they need to succeed. We welcome all people and cultures and promote intercultural understanding.

TRU offers more than 140 on-campus programs and more than 60 Open Learning programs in areas such as arts, business, computer science, education, environment, law, nursing, sciences, social work, tourism and trades and technology. Our average class size is 31 students.

A vibrant community of more than 14,000 students on campus are working towards graduate and undergraduate degrees, diplomas, apprenticeships, professional certificates, continuing studies and English for Academic Purposes (EAP). We have more than 4,000 international students from over 100 countries and regions. Wherever you are from, we can help you follow your passion at TRU.

## TRU offers:

- University preparation
- Short-term customized training programs
- English for Academic Purposes (EAP)
- Associate degrees
- Certificates and diplomas
- Bachelor's degrees
- Post-Baccalaureate diplomas
- Graduate certificates
- Master's degrees
- Juris Doctor

As a university located in the city known as the Tournament Capital of Canada, TRU has thriving sports programs and students have access to amazing fitness facilities like the Tournament Capital Centre (TCC), Olympic-length swimming pool and a FIFA-certified artificial turf field.

TRU has always had a strong international contingent of student athletes. Countries represented include athletes from England, Spain, Australia, Netherlands, Portugal and Trinidad and Tobago.

Take a virtual tour: [tru.ca/tours](https://tru.ca/tours)



# KAMLOOPS. A UNIQUE LOCATION

Our picturesque campus is in the heart of Kamloops, British Columbia, where it overlooks the meeting of the North and South Thompson Rivers. Kamloops is home to over 100,000 friendly residents and is rich with sporting and cultural events and boasts four beautiful seasons to enjoy outdoor adventures.

This region is part of the traditional lands of the Tk'emlúps te Secwépemc Indigenous people and spans grasslands, pine forests, lakes and mountains. Their presence and history contribute to the diversity that influences TRU's campus.

You'll discover parks, museums, art galleries, year-round outdoor activities, shopping, movies, theatre, vineyards and BC's second largest ski resort. Kamloops is also home to numerous churches, a mosque, Sikh temples and a Buddhist temple.

Discover more about Kamloops at [tourismkamloops.com](http://tourismkamloops.com)

More about Kamloops [tinyurl.com/kamvidtour](http://tinyurl.com/kamvidtour)

**100,000**  
Population count  
in 2022

KAMLOOPS AND  
SURROUNDING AREA

The city of Kamloops' economy is strong and diverse. Forestry, mining, retail and agriculture have always anchored the economy of Kamloops as core industries. Today, the emerging areas are strengthening our economic base and contributing to the city's dynamic growth.

## CORE INDUSTRIES

The following industries are marked by significant export activity, bring new dollars into the economy, root supply chains and will continue to serve as driver industries for years to come.

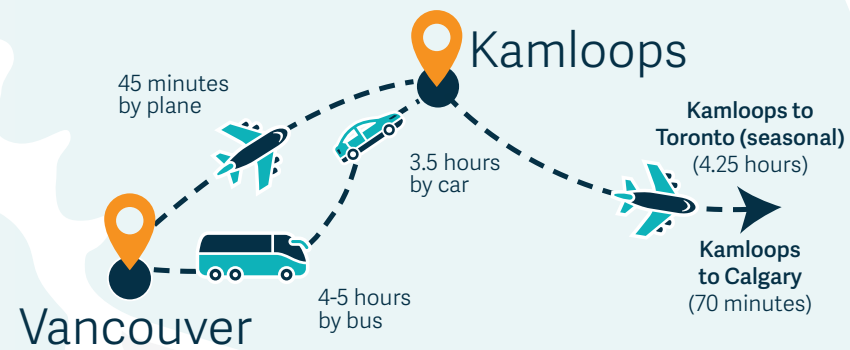
- Transportation & Logistics
- Healthcare
- Forestry
- Manufacturing
- Agriculture
- Retail
- Mining

## EMERGING INDUSTRIES

These are newer industries in the early stages of growth that are beginning to thrive in the community.

- Hi-Tech
- Green Energy
- Tourism

## British Columbia, CANADA



## Free Public Transit

There is limited parking on campus. Take advantage of UPASS, which includes an unlimited City of Kamloops Transit pass. Buses arrive on campus every 15 minutes. [bctransit.com/Kamloops](http://bctransit.com/Kamloops)



**SUMMER**  
23° to 33° C



**AUTUMN**  
10° to 22° C



**WINTER**  
-5° to 4° C



**SPRING**  
10° to 22° C

*These are approximate seasonal highs and lows, not average temperatures. We might hit the peaks or dips only briefly each season.*



**SUN PEAKS RESORT**  
#2 IN BEST CANADIAN  
SKI DESTINATIONS



# CAMPUS LIFE

## Beyond the classroom

### Get involved on campus and reach your full potential

TRU has student clubs for almost every interest. Join one of the existing clubs or start your own! You'll meet like-minded people, make new friends, showcase your talents, create lasting memories and have fun.

**Get involved in student clubs such as:** Adventure U Club, Bangladesh Club, Caribbean Club, Chinese Students & Scholars Club, Enactus, Finance Club, Japanese Club, Modern Marketing Club, Music Clubs, Muslim Association Club, Pan-African Club, Pride Club, Spanish Conversation Club, Vegan Club, Vietnamese Club, Women in Business and more.

Find a full list of clubs at [tru.ca/clubs](http://tru.ca/clubs)

### TRU Generator

Get involved in entrepreneurship on campus. Join the TRU Generator to network and participate in a vibrant startup community. It's open to TRU alumni, faculty, staff and students.

Visit [tru.ca/generator](http://tru.ca/generator)

### TRU Library Makerspace

Bring your ideas into reality at TRU's Makerspace. Join a supportive community where sharing, experimentation and play is encouraged. Experiment with 3D printers, podcasting studios, VR rooms and more.

## Other Student Services


- Medical Clinic
- Wellness Centre
- Writing Help Centre
- Math Help Centre
- Supplemental Learning
- Career and Experiential Learning
- Language Learning Centre

## International Days Festival (IDays)

IDays is our award-winning, week-long celebration of cultures from around the globe. Learn how diverse TRU really is.

IDays is an opportunity to share culture, international experience, research and interests while celebrating TRU's international community and international collaborations.


Find out more at [tru.ca/idays](http://tru.ca/idays)

 Watch IDays videos at [youtube.com/truworld](https://youtube.com/truworld)

## Explore BC with LEAP

The Leisure Exploration Activity Program (LEAP) provides students with educational, fun and exciting experiences each semester for a nominal fee. This is a great way to meet new people, explore the area, experience local culture and try new activities such as:

- camping
- canoeing/kayaking
- curling
- day trips to Vancouver
- ice skating
- ice hockey
- rock climbing
- seasonal parties
- skiing/snowboarding
- whitewater rafting
- wine tours

 Follow [@truleap](https://www.instagram.com/truleap) on Instagram to learn more



# SPORTS, RECREATION & ACTIVITIES

TRU's Kamloops campus is right next to the city of Kamloops' top-notch athletic facilities in the Tournament Capital Centre (TCC) sports complex, which includes an Olympic-length swimming pool, indoor and outdoor tracks and numerous recreation spaces. Access to TCC's Aquatic Centre is included in TRU's student fees and all TRU students receive 50% off additional usage fees.

## Varsity athletics

The WolfPack have eight teams: six of them compete in USPORTS/Canada West which is the highest level of university sports in Canada. Those sports are men's and women's soccer, men's and women's volleyball, men's and women's basketball.

The other two club sports are cheerleading and baseball.

TRU has always had a strong international contingent of student-athletes. Countries represented in the past include athletes from England, Spain, Australia, Netherlands, Portugal and Trinidad and Tobago.

For more information, visit [gowolfpack.ca](http://gowolfpack.ca)



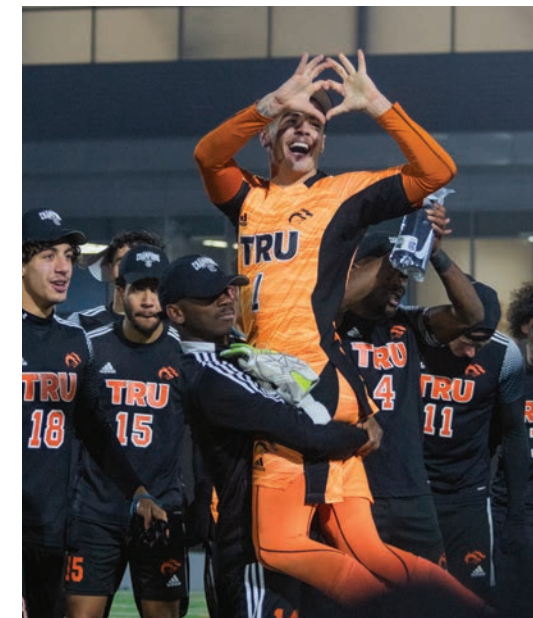
## Intramural sports

TRU Recreation offers non-competitive intramural and drop-in games of badminton, basketball, dodgeball, floor hockey, soccer, volleyball, pickleball and cricket, as well as various fitness classes, events and tournaments.

[tru.ca/recreation](http://tru.ca/recreation)

## Off-campus sports

Kamloops, the Tournament Capital of Canada, has top-level coaching and club competition in many different sports including figure skating, football, gymnastics, rowing, rugby, swimming and skiing. Students interested in competitive/club sports can attend TRU while pursuing their sport off campus.



# WORK OPTIONS FOR INTERNATIONAL STUDENTS

## Work during your studies

International students are eligible to work on and off campus while studying full-time, and qualify for a full-time work permit after graduation.

Find out about opportunities for international students at [cic.gc.ca/english/study/work.asp](http://cic.gc.ca/english/study/work.asp)

## Jumpstart your career

The Career & Experiential Learning department helps students plan their careers from building a professional resumé to getting selected for a job interview. These career counsellors have years of experience and are committed to supporting students in reaching their career goals through various initiatives including on-campus job fairs and seminars.

## Work after graduation

As an international student graduating from a Canadian post-secondary institution, you are eligible to remain in Canada to work. Students completing a minimum two-year program of study may be eligible to work for up to three years after graduation.

Many of our international graduates have successfully found jobs in Canada in their area of study. Companies that hire TRU graduates include banks, Crown corporations, major retailers, municipal governments, non-profits and universities (including TRU).

Get more information at [cic.gc.ca/english/study/work-postgrad.asp](http://cic.gc.ca/english/study/work-postgrad.asp)

Here are some of the many companies that hire TRU graduates:

### Banks

- Bank of Canada
- Bank of Montreal
- CIBC
- HSBC Bank
- Interior Savings
- Royal Bank of Canada
- Scotiabank
- TD Bank Group

### Crown Corporations

- BC Hydro
- BC Public Service
- BCLC
- Interior Health Authority

### Higher Education

- BCIT
- Thompson Rivers University
- University of British Columbia

### Major Retailers

- Air Canada
- Best Buy
- Blackberry
- Canadian Tire
- Hootsuite Media Inc.
- Re/Max Real Estate
- KPMG
- Loblaw Companies
- Shaw Communications
- Telus Corporation
- Tolko Industries Limited

### Municipal Governments

- City of Kamloops
- City of Surrey
- City of Vancouver

### Non-Profit Organizations

- Canadian Cancer Society

Explore TRU's alumni network on LinkedIn [linkedin.com/school/thompson-rivers-university/people](https://www.linkedin.com/school/thompson-rivers-university/people)



# CO-OPERATIVE EDUCATION

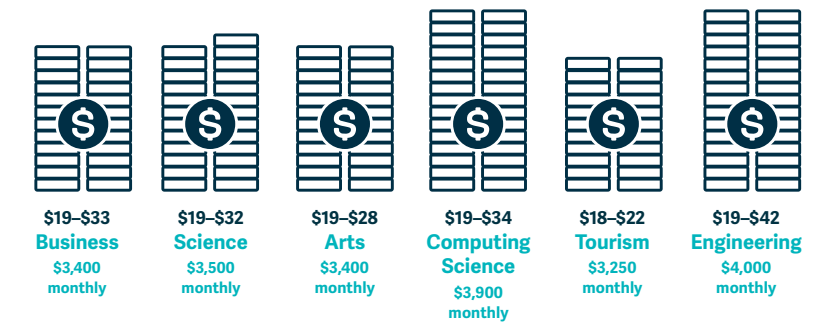
Co-operative education combines academic studies with paid work experience. Students alternate between terms of full-time study and full-time employment.

## Why Co-op?

- Get paid for career-related work experience while studying
- Earn academic credits and transcript distinction
- Maximize job opportunities upon graduation
- Choose from Co-op placements in Kamloops and across Canada
- TRU Co-op office prepares students for interviews and job placements
- Choose to work up to four semesters

! Students can receive academic credit for Co-op work terms.

## Co-op student wages by program



**93%**  
graduates in the  
labour force  
(source: BC Student  
outcomes)

## Sample Co-op schedule (based on a 4-year degree)

	YEAR 1	YEAR 2	YEAR 3	YEAR 4	YEAR 5
Sept to Dec	Academic semester 1	Academic semester 3	Academic semester 5	Academic semester 7	
Jan to Apr	Academic semester 2	Academic semester 4	Academic semester 6	Co-op work term 3	Academic semester 8
May to Aug		Co-op work term 1	Co-op work term 2	Co-op work term 4	Graduation

For Co-op requirements, fees and more information, go to [tru.ca/coop](http://tru.ca/coop)

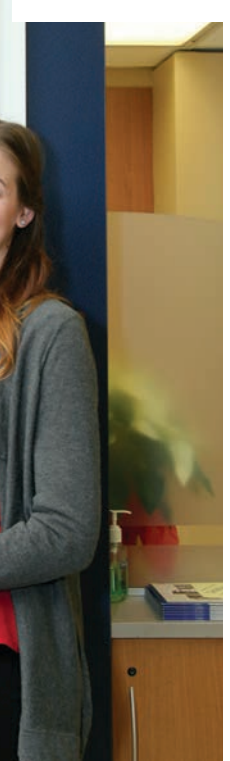


### Bachelor of Business Administration

Co-op helped me gain relevant skills before graduation, and I received an immense amount of experience in my eight months working for TRU World. TRU's Career Education Department provided resources to help me build a career plan. I would recommend every new student visit the department for any career-related services.

**KARANVIR SINGH**  
INDIA

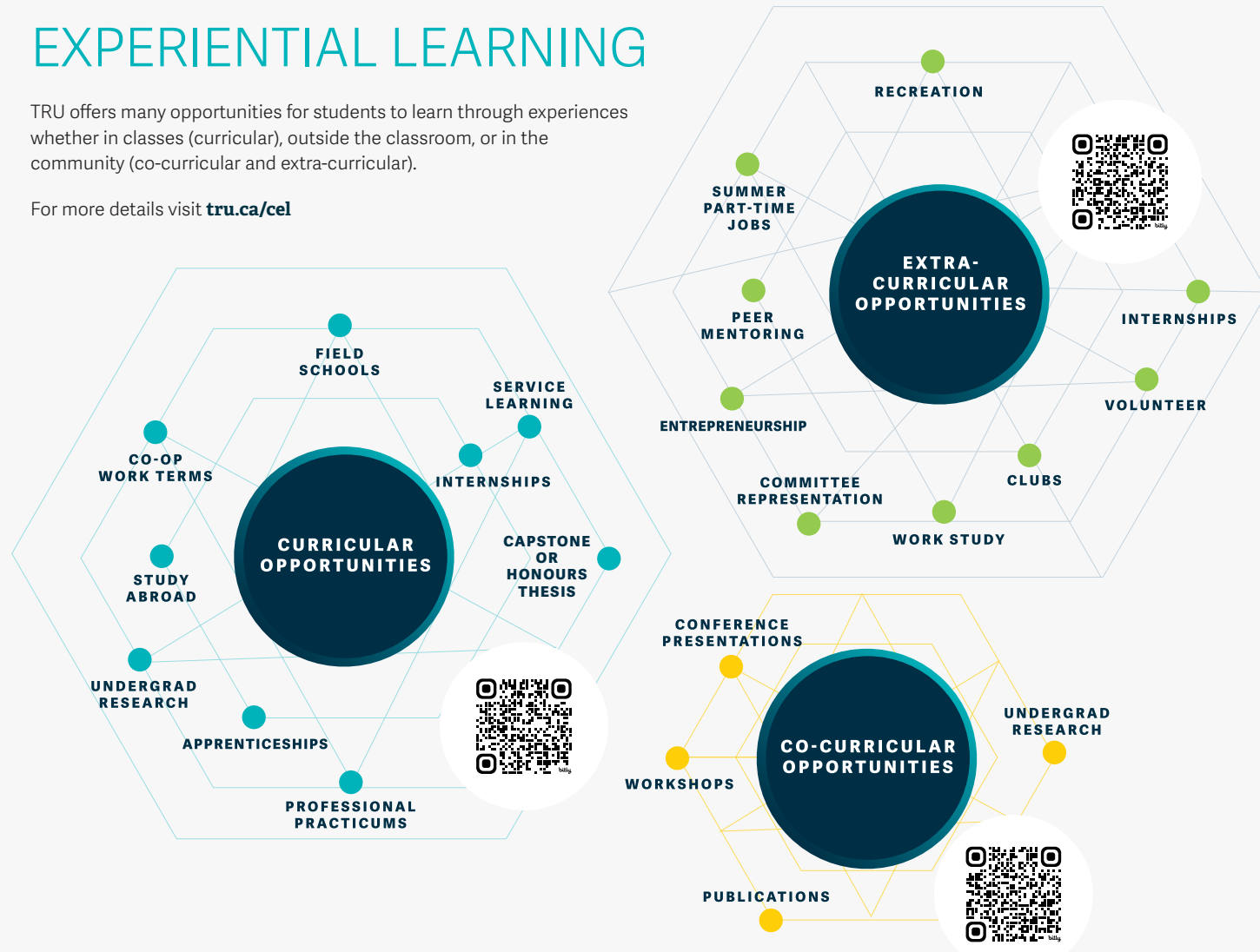
**\$17.40**  
per hour  
Minimum wage  
in British Columbia



# EXPERIENTIAL LEARNING

TRU offers many opportunities for students to learn through experiences whether in classes (curricular), outside the classroom, or in the community (co-curricular and extra-curricular).

For more details visit [tru.ca/cel](http://tru.ca/cel)



# SUPPORTING OUR STUDENTS

TRU has Canada's largest and most comprehensive international student services and support team.

Have questions? Speak with us today.  
[TRU.CA/CONNECT](http://TRU.CA/CONNECT)



 Rae-Anne Rickett Associate Director, Int'l Admissions & Enrolment Services	 Lorna Hutchinson Int'l Admissions & Records Officer	 Jane Ouellette Int'l Admissions & Records Officer	 Jean Linteris Int'l Admissions & Records Officer	 Charlene Milburn Int'l Admissions & Records Officer	 Ananna Mitra Int'l Admissions & Records Officer
 Jet Jensen Int'l Admissions & Records Officer	 Savannah Dakers Int'l Admissions & Records Officer	 Debra Shafer Int'l Admissions & Records Officer	 Sanay Mathur Int'l Admissions & Records Officer	 Julia Ehlenbroeker Int'l Admissions & Records Officer	

## International admissions

Our international admissions team:

- processes applications
- provides course registration
- collects payments
- assists with admission inquiries
- assists with registration inquiries

 Charlene Munro Advising Supervisor	 Lesley DeRose Int'l Academic Advisor	 Yuliia Medvedieva Int'l Academic Advisor	 Marnie Storie Int'l Academic Advisor
 Brianna McIlquaham Int'l Academic Advisor	 Sarah Bingham-Hall Advising Assistant	 Nivi Xavier Advising Assistant	

## International academic advisors

Once you're accepted, our international academic advisors:

- plan your courses before you arrive
- monitor your academic performance
- provide counselling support
- advise on program requirements
- hold workshops

## THE LIFE CYCLE OF A TRU STUDENT



## International student advisors & homestay

Our multilingual student services team helps with personal counselling and assistance in most aspects of student life in Canada, including:

- housing
- visas, study permit and work permit applications
- orientation and welcome services including airport reception, city tours and peer programs
- academic liaison
- cultural support

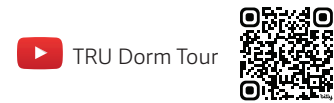
 RCIC Reuben Onyango Director, International Student Services	 RISIA Rika Kimura ISA Japanese	 RISIA Tanvir Alam ISA Bengali	 RISIA Stephanie Tate ISA Hindi, Punjabi	 RISIA Osi Omonokhua ISA Hausa	 RISIA Alex Bui ISA Vietnamese
 RISIA Reyna Denison ISA Spanish	 RISIA Katya Alvarez ISA Spanish	 RISIA Marianna Abutalipova Int'l Support Services Supervisor Russian, Dutch, French	 RCIC Zahid Sheikh ISA Hindi, Punjabi, Urdu	 RISIA Sandy Defieux ISA Mandarin	 Sonali Homestay Supervisor Hindi, Punjabi

RCIC - Regulated Canadian Immigration Consultants  
RISIA - Regulated International Student Immigration Advisors  
ISA - International Student Advisor

# HOUSING

Join a vibrant, active community of students from all over the world. Apply directly out of high school before **April 1** and secure a guaranteed space in one of our on-campus residences. After that date, applications will be accepted on a first-come, first-served basis.

For more information about on-campus housing, visit [tru.ca/housing](https://tru.ca/housing)



Photos left to right: North Tower, McGill, East Village, Coyote Den



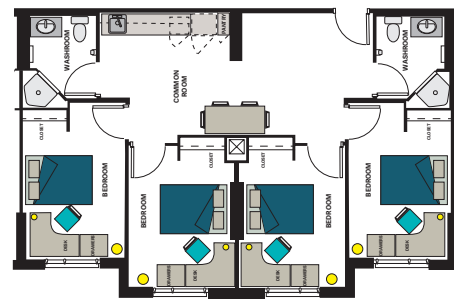
## North Tower

Enjoy one of the best views in the city at the 11-storey North Tower. Access premium amenities such as a cardio room, dance studio, patio with large BBQ, games room and regular social activities.

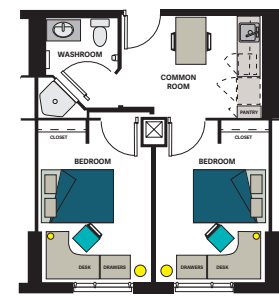
### NORTH TOWER SEPTEMBER – APRIL

Application fee	2 or 4 bedroom suite
\$100	\$9,100*

North Tower 4 Bedroom Plan



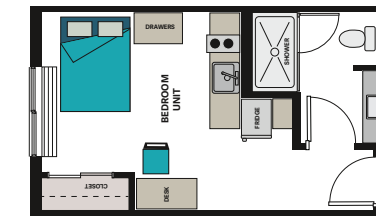
North Tower 2 Bedroom Plan



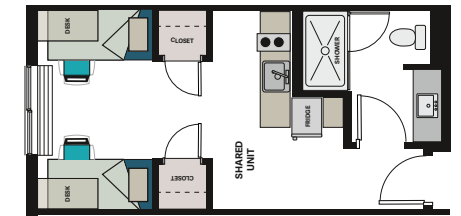
## Coyote Den - S'kelepéllcw

The new East Village residence is centrally located and within walking distance of campus, shopping and transit. Each unit has a private entrance, bathroom and apartment-sized kitchen. Shared and single bedroom suites are available.

Coyote Den Single Bedroom



Coyote Den Double Room (shared)



### COYOTE DEN SEPTEMBER – APRIL

Application fee	Single Room	Double Room (shared)
\$100	\$10,000*	\$4,388*

**\*Note:** Rates are for the 2024/25 year and are subject to change without notice. Floor plans may slightly differ from room to room. All rates include a \$60 mandatory residence life activity fee which is non-refundable.

## Features

	ON CAMPUS	24/HOUR FRONT DESK	WIFI	LAUNDRY	BIKE STORAGE	FITNESS	COST PER MONTH*
North Tower	✓	✓	✓	✓	✓		\$1138
McGill Residence	✓	✓	✓	✓	✓	✓	\$759
East Village	10 min walk		✓	✓			\$808
Coyote Den   S'kelepéllcw	10 min walk	✓	✓	✓			\$548 – \$1250

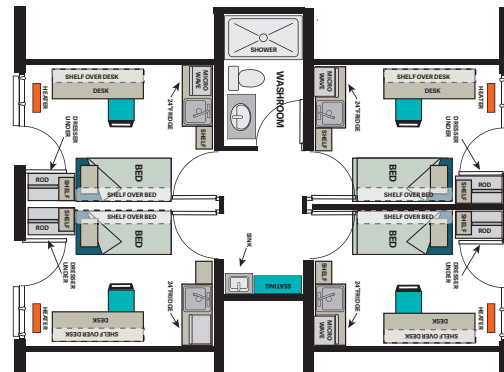
## McGill Residence

Ideal for students looking to live in an active, close-knit community. McGill Residence has amenities that include laundry, games room, kitchen and study room.

### MCGILL RESIDENCE SEPTEMBER – APRIL

Application fee	Room
\$100	\$6,075*

McGill Residence 4 Bedroom Plan



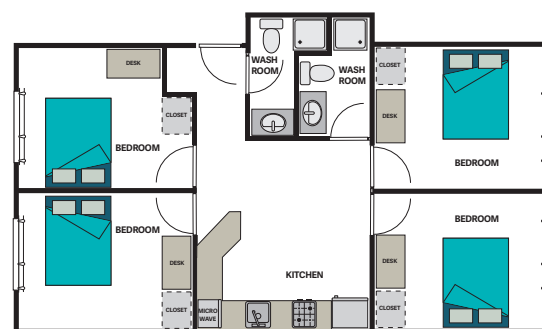
## East Village

Have the independence of off-campus living with the convenience of on-campus life at East Village. This location is ideal for students looking for a more independent, mature community with student-friendly amenities.

### EAST VILLAGE SEPTEMBER – APRIL

Application fee	4 bedroom suite
\$100	\$6,465*

East Village 4 Bedroom Plan



**\*Note:** Rates are for the 2024/25 year and are subject to change without notice. Floor plans may slightly differ from room to room. All rates include a \$60 mandatory residence life activity fee which is non-refundable.

## Homestay: Live with a Canadian family

Managed by TRU World staff, TRU's homestay program is a great way to experience Canadian culture and practice English by living with local families or individuals. More than 450 carefully selected Canadian homestay providers are in this program. Students get a private, furnished bedroom, three meals a day (and snacks) and a chance to live as part of a Canadian family while sharing their own culture.

<b>HOMESTAY</b>	SEPTEMBER – APRIL
\$9,600 yearly	\$1200 monthly, including meals





# WILLIAMS LAKE CAMPUS

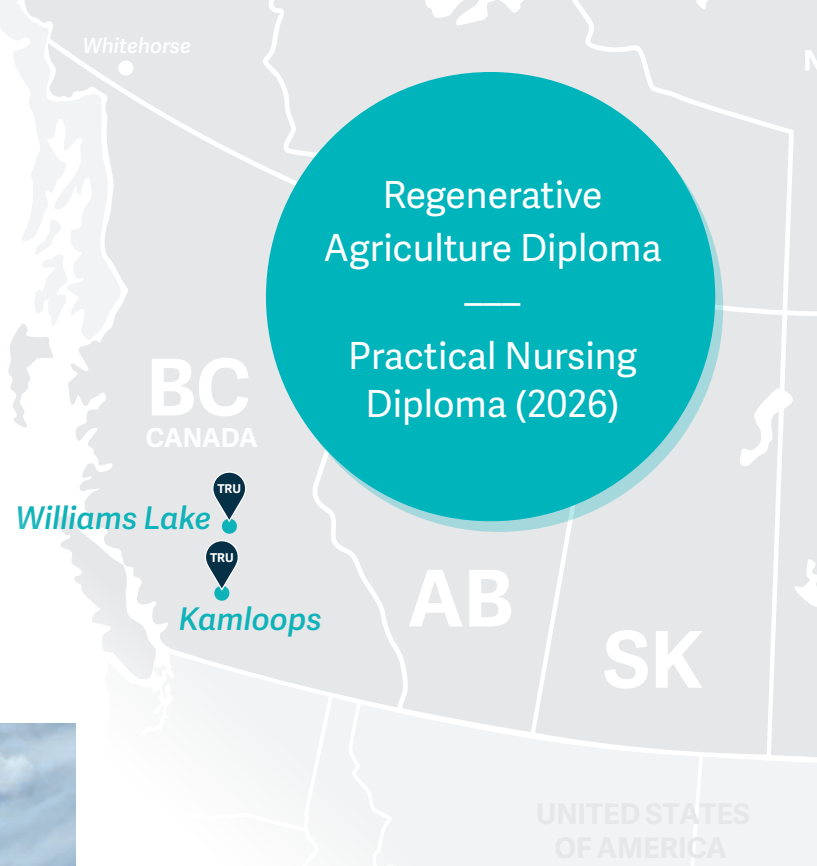
Williams Lake is a long-time ranching and farming community with an economy based on area resources such as forestry and mining. TRU Williams Lake has the only ranching program in BC focusing on regenerative agriculture.

In Williams Lake, the cost of living is affordable and people know their neighbours. Williams Lake has an expanding hospital and extended-care homes, so there is a demand for university-trained healthcare workers.

The campus boasts small class sizes, usually between 15 and 20 students, depending on the program. There are benefits to such an intimate educational setting — faculty get to know their students and the campus is safe, friendly and close knit.

TRU Williams Lake is located in a residential area and there are housing options within walking distance of the campus.

For more information, visit [tru.ca/williamslake](http://tru.ca/williamslake)



**Regenerative Agriculture Diploma**  
(Formerly Applied Sustainable Ranching Diploma)

Growing up in Ghana, West Africa, I saw an opportunity for agriculture to raise the population's standard of living. Seeking an effective approach to making a difference in the world, I've completed my first year of TRU's Applied Sustainable Ranching two-year program and already feel confident managing a farm.

**MAJEED NASHIRU**  
GHANA

Watch **Majeed's** ranching program experience



# DISTANCE EDUCATION

## Learn wherever you are

As BC's leading online and distance education provider, TRU Open Learning offers over 60 programs and 500 courses. More than 17,000 TRU students study online or by distance.

You can complete some courses before you arrive to study on campus, saving you time and money.

While on campus, you can take blended studies combining in-class and online Open Learning courses. This allows you to maintain a flexible schedule while still getting credit for courses that count toward your full degree.

Get the details at [truopen.ca](http://truopen.ca)

# RESEARCH AT TRU

As one of six members of the Research Universities' Council of British Columbia, TRU is committed to distinguishing itself among BC's research leaders. We support efforts to achieve excellence with research facilities, internal funding, research chairs, knowledge mobilization resources and student research.

Research at TRU is making a difference. Many of our most important research discoveries stem from community-based research questions

## TRU Centre for Optimization and Data Science

The Centre for Optimization and Data Science at Thompson Rivers University is an intellectual hub to foster multi-disciplinary research and to enhance the quality of research, not only in the theoretical study of optimization and decision-making science, as well as applications of optimization to real-world problems.

Learn more: [tru.ca/cods](http://tru.ca/cods)



that result in real-life solutions with immediate and far-reaching impact. They influence policy, enrich culture, improve programs and build more vibrant cities. Our faculty are engaged in training the next generation of world-class researchers at both the graduate and undergraduate level.

General inquiries, email [research@tru.ca](mailto:research@tru.ca) | [tru.ca/research](http://tru.ca/research)

## Visiting research students

TRU places a high priority on providing undergraduate and graduate research opportunities for students. Inquiry-based and creative learning are recognized as academic foundations in the Academic Plan. No matter what your discipline is, there are opportunities at TRU for you to engage in independent research and artistic inquiry. TRU professors are committed to mentoring and helping you meet your research goals.



Brain & Behaviour Lab



# SHORT-TERM STUDIES

For more than 30 years, TRU has delivered exceptional customized learning experiences. Our programming options include language and culture courses, professional development training and customized programming, all of which can be offered in person or online.

## Programs may include:

- Accommodation, Homestay (including meals) or dormitory
- Scheduled recreational and cultural activities
- Airport pick-up and drop off within Kamloops
- TRU campus and city orientation
- Support from TRU advisors and instructors

For more information and to apply for short-term programs, visit [truworld.ca/itc](http://truworld.ca/itc)

See what students experience during our short-term programs



## Language and Culture Open Programs

These open programs are available to large and small groups. In-person and online options provide opportunities to meet the educational needs of all our students. Both options include intensive English language training as well as cultural and recreational activities.

Online and in-person programming may include an elective of your choice:

- Applied English
- Global Citizenship
- Healthy Choices
- Leadership Skills
- STEM Skills
- Workplace English

### Winter Language and Culture Programs

4-week: January 7 to 31, 2025 – \$4,275 CAD

3-week: February 18 to March 7, 2025 – \$3,795 CAD

### Summer Language and Culture Programs

4-week: July 2 to 25, 2025 – \$4,275 CAD

3-week: August 6 to 22, 2025 – \$3,795 CAD

### Soccer and Language Camp

Come to TRU for your intercultural experience, enhance your English proficiency, increase strength and conditioning, while improving your soccer skills.

June 23 to July 10, 2025 – \$3,875 CAD

## Language and Culture Transition Program

Come to TRU three weeks before you start your academic classes, practice your English and prepare for your Accuplacer test.

## Customized Training

The International Training Centre (ITC) works with partners around the world on their unique training needs. Ask us about:

- Teacher Training
- Health Care Programs
- Tourism / Adventure Training Programs
- Business Programs

## Certificate Programs

The courses within this certificate program can be scheduled as a in-person cohort or individuals can study online. Once you complete all six courses you will receive a certificate of completion from TRU.

Our online programs are offered live with one of our certified instructors. Certificate programs include:

- Excellence in Professional English
- Global Citizen
- Professional Development for Educators
- Professional Development for Health Care
- Standardized Test Preparation

# INTERNATIONAL PARTNERSHIPS

TRU's transnational education and study abroad programs offer students unique and exciting ways to gain global experience and earn TRU credits with a wide range of partner institutions.

## TRANSNATIONAL PROGRAMS

### Take a TRU program at your home institution

TRU works with partner institutions to deliver our programs in partners' home countries. Over 700 students are currently enrolled in TRU business and computing science programs in China and India.

### Articulation Program

#### Transfer your credits towards a degree at TRU

Students can transfer credits earned at partner institutions towards TRU arts, business, computing science, education, science, technology and tourism programs.

### Pathway Program

#### Transition from preparatory studies to TRU

TRU partners with high schools and English language schools in Canada and abroad so qualified students can complete their preparatory studies, then transition to university studies at TRU.

### Visiting Student Program

#### Take part of your program in Canada for credits

TRU has partnered with other institutions worldwide to offer a Visiting Student Program which provides students with a study opportunity in Canada. All courses taken at TRU will be counted towards university credits at the student's home institution, based on the agreement between TRU and the partner institution.



2018 Respiratory Therapy Field School to Cuzco, Peru. Faculty of Science Health 3200 Cardiopulmonary Health

## STUDY ABROAD PROGRAMS



Megan Graham, Natural Resource Science Study Abroad in Japan

## Expand your studies at TRU

Don't be limited to just completing your degree in Canada. Expand your experience by participating in one of TRU's many international mobility opportunities.

## Student Exchange

International students may choose from a list of partner institutions to study for one or two semesters in another country. Tuition is paid to TRU and credits are applied towards your TRU degree.

## Short-Term Summer Exchange Programs

If you're not sure about a full semester abroad, consider a two to four-week short-term summer program with a partner institution — all while earning credit toward your TRU degree.

## International Field Schools

TRU provides a range of exciting and specialized faculty-led field schools, taking learning beyond the classroom and earning credits while exploring the world.

For more information, visit [tru.ca/studyabroad](http://tru.ca/studyabroad)

# OUR STORIES

What's better than real life experiences? See what our students and alumni have to say about all that TRU offers.



## Bachelor of Science in Nursing

TRU's School of Nursing instructors have supported me throughout the program, which has been a difficult journey at times. The faculty are always looking for opportunities for students to practice skills and apply their knowledge in clinical settings, helping us to better retain course material."

### ADETOUN ODUBOTE

NIGERIA



## Master of Business Administration

TRU's Master of Business Administration program not only provides expertise in your field of study, but faculty members also prepare you to enter the professional world by helping to perfect your application documents. TRU's MBA program exceeded all my expectations."

### BENNO BEHRNDT

GERMANY



## Bachelor of Arts, Major in Psychology

The time I've spent at TRU has been the best. I've met amazing people that, even though I'm far from home and my family, always make me feel good and at home. TRU has also given me many opportunities to discover who I am and want to be through activities, events, classes, programs and so many other things that enhance daily my university experience. TRU is, with no doubt, where I belong."

### MANUELA CEBALLOS

COLOMBIA



## Post-Baccalaureate Diploma, Business Administration

Choosing TRU for my Post-Baccalaureate Diploma has been a great experience. It's very welcoming and I've felt at-home here since the first day. I've met people from all over the world, enjoyed breathtaking views every day, and am inspired to succeed both academically and personally."

### ANYA BOHACH

UKRAINE



## Bachelor of Science, Animal Biology

Moving away from home to a new city can be scary, but I was welcomed at TRU with warm smiles and open arms. I've had the opportunity to explore topics beyond my major and participate in numerous activities. I'm encouraged to embrace my diversity while learning from other cultural perspectives."

### ANDREA VALCÁRCEL ABUD

DOMINICAN REPUBLIC



## Master of Science in Data Science

TRU's MSc in Data Science has been transformative, providing advanced knowledge and unique opportunities. During my time at TRU, I have had the opportunity to become a research assistant as well as the Vice President of the Data Science Club. I've gained invaluable skills and experience. The faculty's guidance and the program's government recognition promises a bright future in Canada, boosting my professional confidence."

### TARIQUE MAHMUD

BANGLADESH



## Computing Science Diploma

The Career and Experiential Learning department was of great help to me. They helped me with everything career-related, from improving my resumé to developing my skills, especially my communication and networking skills. They work really hard to help students succeed professionally."

While still completing my Co-op requirements, I received a call for my first interview in the program, with Trimble. I was nervous and wasn't very confident with my communication skills. But my Co-op supervisor gave me the support I needed to succeed."

### YASSIR CHADY

MAURITIUS



## VERA WU CHINA

## Master of Education

TRU's Master of Education program has a flexible structure that allows you to focus on your interests in the field. While you'll learn how to do a teaching job in your Bachelor of Education, the Master of Education teaches you how to reflect and improve to sustain learning and growth."

### VERA WU

CHINA

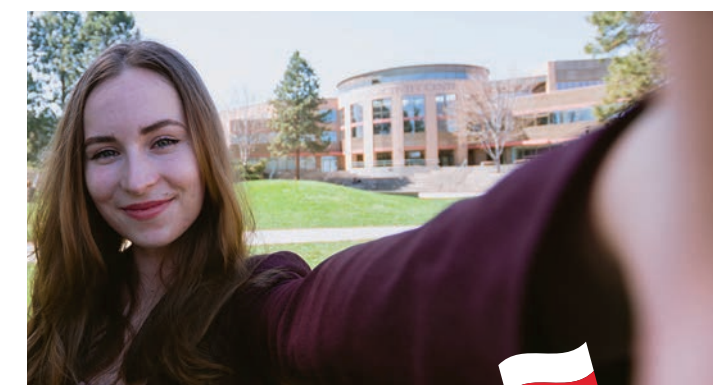


## MARIO REYES CASTRO

I'd like to launch my own start-up in the near future and I'm confident TRU's MBA program will help me reach this goal. The MBA faculty are highly skilled, and the program has supplied me with the academic background, experience and leadership skills to succeed in our ever-changing world."

### MARIO REYES CASTRO

MEXICO



## Bachelor of Business Administration, Economics

I came to TRU for a degree but got so much more. I made amazing friends in a picturesque city, worked on a United Nations agency project, got involved with student governance and was a student club leader. TRU offers unparalleled resources and services for its students to thrive."

### ARIA MARTA KORNAS

POLAND

# STUDY OPTIONS FOR INTERNATIONAL STUDENTS

**i** All course and admission information subject to change.

	LENGTH	INTAKES	ADMISSION TYPE	EAP	CO-OP/ PRACTICUM	PAGE
<b>JURIS DOCTOR</b>						
Law – Juris Doctor	3 Y	Sept	C		P	33
<b>MASTER'S DEGREES</b>						
Master of Arts in Human Rights and Social Justice (MAHRSJ)	1.5 Y	Sept	C		P	26
Master of Business Administration (MBA)	1–2 Y	Sept/Jan	C			27
Master of Science in Data Science (MScDS) Early application deadline: Jan 15	2 Y	Sept	C			33
Master of Education (MED)	1.5–2 Y	Sept/Jan	C			30
Master of Environmental Economics and Management (MEEM)	1–2 Y	Sept/Jan	C			27
Master of Science in Environmental Science (MSc)	1–2 Y	Sept/Jan	C			33
Master of Nursing (MN)	2 Y	Sept	C		P	32
Master of Science in Environmental Economics and Management (thesis-based) (MScEEM)	1–2 Y	Sept/Jan	C			27
<b>GRADUATE CERTIFICATES AND POST GRADUATE DIPLOMAS</b>						
Graduate Certificate in Education Studies (GCES) (Pre-MEd)	4 m + EAP	Sept/Jan/May	C	Yes		30
Teaching English to Speakers of Other Languages (TESOL)	4 m	Sept/Jan/May	C		P	tru.ca
<b>POST-BACCALAUREATE DIPLOMAS AND CERTIFICATES</b>						
Post-Baccalaureate Diploma in Applied Data Science	2 Y (60 cr)	Sept				
Post-Baccalaureate Diplomas in Business <i>Accounting, Business Administration, Economics, Economics and Political Studies, Entrepreneurship, Finance, Human Resource Management, International Business, Mathematics and Economics, Marketing and Supply Chain Management</i>	2 Y (48-60 cr)	Sept/Jan	O	Yes	C	27–29
Post-Baccalaureate Diploma in Politics and International Studies	1.5 Y (48 cr)	Jan		Yes		26
Post-Baccalaureate Diploma in Tourism Destination Development	2 Y (54 cr)	Sept/Jan/May	L		C	24–25
<b>UNDERGRADUATE DEGREES</b>						
Bachelor of Arts <i>Majors: Economics, Economics &amp; Math, Economics &amp; Political Studies, English, Geography &amp; Environmental Studies, History, Mathematics, Philosophy, Psychology, Sociology, Theatre Arts</i>	4 Y (120 cr)	Sept/Jan/May	O	Yes	C	26
Bachelor of Business Administration <i>Majors: Accounting, Economics, Entrepreneurship, Finance, Human Resource Management, International Business, Marketing, Supply Chain Management</i>	4 Y (120 cr)	Sept/Jan	O	Yes	C	29
Double Degrees: Bachelor of Business Administration & Bachelor of Arts or Bachelor of Business Administration and Computing Science <i>*Duration: 5 years or 1 year if proper degree was obtained</i>	5 Y* (150 cr)	Sept/Jan	O	Yes	C	29
Bachelor of Communication and Digital Journalism <i>Majors: Digital Journalism, Public Relations, Media Studies</i>	4 years (120 cr)	Sept/Jan/May	O	Yes	C	26
Bachelor of Computing Science	4 Y (120 cr)	Sept/Jan	O	Yes	C	34
Bachelor of Education (Elementary) <i>*Duration: 5 years or 2 years if proper degree was obtained</i>	5 Y* (150 cr) or 2 Y (60 cr)	Sept	C		P	30
Bachelor of Education (Secondary) Science, Technology, Engineering and Mathematics (STEM) <i>*Duration: 5 years or 1 year if proper degree was obtained</i>	5 Y* (180 cr) or 1 Y* (60 cr)	July	C		P	31
Bachelor of Engineering in Software Engineering	5 Y (147 cr)	Sept	C		C	34
Bachelor of Engineering in Computer Engineering	5 Y (147 cr)	Sept	C		C	34
Bachelor of Interdisciplinary Studies (3rd year entry)	2 Y (60 cr)	Sept/Jan	L		C	26
Bachelor of Natural Resource Science	4 Y (120 cr)	Sept/Jan/May	L		C	34
Bachelor of Science <i>Majors: Animal Biology, Biology, Cellular, Molecular and Microbial Biology, Chemical Biology, Chemistry, Computing Science, Computing Science &amp; Mathematics, Data Science, Ecology &amp; Environmental Biology, Environmental Chemistry, General Science, Mathematics, Mathematics &amp; Economics, Physics, Pre-Professional Health Science</i>	4 Y (120 cr)	Sept/Jan/May	O	Yes	C	34
Bachelor of Science in Nursing	4 Y (120 cr)	Sept	C		P	32
Bachelor of Social Work (3rd year admission)	4 Y (120 cr)	Sept	C		P	31
Bachelor of Tourism Management <i>Concentrations: Adventure studies, Entrepreneurship, Tourism Management</i>	4 Y (120 cr)	Sept/Jan/May	L	Yes	C	25
Engineering – first & second year transfer to UBC and UVic	1–2 Y	Sept	C		C	35


Y=YEARS  
M=MONTHS  
CR=CREDITS

C=COMPETITIVE  
O=OPEN  
L=LIMITED SEATS

C=CO-OP  
P=PRACTICUM

Please visit [tru.ca/programs](http://tru.ca/programs) for full list of programs and most current fees.

	LENGTH	INTAKES	ADMISSION TYPE	EAP	CO-OP/ PRACTICUM	PAGE
<b>DIPLOMA AND ASSOCIATE DEGREE PROGRAMS</b>						
Accounting Technician Diploma	2 Y (60 cr)	Sept/Jan	O	Yes		29
Adventure Guide Diploma	2 Y (60 cr)	Sept	L		C	25
Regenerative Agriculture Diploma (Williams Lake campus only)	2 Y (60 cr)	Sept/Jan/May	L		P	35
Architectural & Engineering Technology (ARET) Diploma	2 Y (80 cr)	Sept	C			35
Associate of Arts Degree	2 Y (60 cr)	Sept/Jan/May	O	Yes		
Associate of Commerce & Business Administration Degree	2 Y (60 cr)	Sept/Jan	O	Yes		29
Associate of Science Degree	2 Y (60 cr)	Sept/Jan	O	Yes		34
Computing Science Diploma	2 Y (60 cr)	Sept/Jan	O	Yes	C	35
Early Childhood Education Diploma	1.5 Y (58 cr)	Sept	L		P	31
Events & Conventions Management Diploma	2 Y (60 cr)	Sept/Jan	L		P	25
Horticulture Management Diploma	2 Y (49 cr)	Aug	L		P	36
Human Service Diploma	2 Y (49 cr)	Sept			P	31
Management Diploma	2 Y (60 cr)	Sept/Jan	O	Yes		29
Police & Justice Studies Diploma	2 Y (60 cr)	Sept	L			33
Power Engineering Technology Diploma	2 Y (74 cr)	Sept	L			
Practical Nursing Diploma (Williams Lake campus only)	2 Y (68 cr)	Sept	C		P	32
Resort & Hotel Management Diploma	2 Y (60 cr)	Sept/Jan	L		P	25
Respiratory Therapy Diploma	3 Y (125 cr)	Sept	C	Yes	P	32
Sport Event Management Diploma	2 Y (60 cr)	Sept/Jan	L		P	25
Tourism Management Diploma	2 Y (60 cr)	Sept/Jan	L		P	25
Water & Wastewater Technology Diploma	2 Y (63 cr)	Sept	L			36
<b>CERTIFICATE PROGRAMS</b>						
Adventure Guide Certificate	1 Y (30 cr)	Sept	L			25
Business Foundations	1 Y	Sept/Jan/May	O	Yes		
Horticulture Certificate	1.5 Y	Aug	L			36
Professional Cook 1 & 2 Certificate	1 Y	Sept/Jan	L		P	25
Water & Wastewater Utilities Certificate	1 Y	Aug	L			36
<b>TRADES FOUNDATION PROGRAMS</b>						
Automotive Service Technician, Carpenter, Diesel Engine Mechanic, Electrician, Electrical/Industrial Mechanic, Heavy Duty Equipment Technician, Instrumentation & Control Technician, Industrial Mechanic (Millwright), Machinist, Metal Fabricator, Plumber, Welder	2 Y	Varies	L		C	36
Power Engineering Fourth Class	40 wks	Sept	L			
Refrigeration and Air Conditioning Mechanic	25 wks	Sept	L			
<b>UNIVERSITY PREPARATION &amp; STUDENT DEVELOPMENT</b>						
Adult Basic Education & BC Adult Graduation Diploma	N/A	Sept/Jan/May				
English for Academic Purposes (EAP) <i>*Dependent on student placement</i>	4–18 months*	Sept/Jan/May				23
University Preparation Courses	N/A	Sept/Jan/May				23

<b>Undergraduate Tuition (U-Prep and Academic)</b> <ul style="list-style-type: none"> <li>\$10,188/semester (up to 12 credits/4 courses)</li> <li>\$12,735/semester (15 credits/5 courses)</li> <li>each additional credit: \$849/credit up to 12 credits</li> </ul>	<b>Graduate Tuition</b> <ul style="list-style-type: none"> <li>MAHRSJ (2 years/4 semesters): \$36,575</li> <li>MBA (2 years): \$55,568</li> <li>MEEM/MScEEM (2 years): \$59,383</li> <li>MSc Environmental Science (2 years/6 semesters): \$48,768</li> <li>MSc Data Science (2 years/4 semesters): \$49,4694</li> <li>MN (2 years/6 semesters): \$43,525</li> <li>GCES (Pre-MEd): \$10,972</li> <li>MEd (4 semesters): \$36,575</li> </ul>	<b>Post-Baccalaureate Diploma Tuition</b> <ul style="list-style-type: none"> <li>\$2,457/course (\$849/credit)</li> <li>\$10,188/semester (12 credits/4 courses)</li> <li>\$12,735/semester (15 credits/5 courses)</li> </ul>	<b>English for Academic Purposes (EAP) Tuition</b> <ul style="list-style-type: none"> <li>EAP Level 1,2,3: \$10,440 (per semester)</li> <li>EAP Level 4: \$8,352 (4 EAP courses)</li> <li>EAP Level 5: \$9,271 (2 EAP courses + 2 academic courses)</li> </ul>	<p>For the most up to date fees</p>  <p><i>Tuition fees do not include general fees (TRUSU dues, U-Pass, health and dental insurance etc.)</i></p>
--	---	---	--	---

**i** Fees subject to change

Please visit [tru.ca/programs](http://tru.ca/programs) for full list of programs and most current fees.

# INTERNATIONAL ACCREDITATIONS AND TRANSFER CREDIT

## International Baccalaureate (IB)

The IB diploma is accepted for admission to TRU. Transfer credit will be granted for A level courses completed with a score of 5 or higher. Students have the option to decline the transfer credit if they wish to complete the course(s) at the university.

To transfer credits to arts, business or science, you must have:

- Official IB transcript (sent to International Admissions office directly from the testing centre)
- Higher learning courses only
- Grade of 5, 6 or 7

## Advanced Placement (AP)

AP exams will be accepted for admission to TRU. Official transcripts must be provided from the College Board. To transfer credits you must have:

- Official AP transcript
- Grade of 4 or 5

## General Certificate of Educational Studies (GCES)

Students completing their GCES will be considered for admission based on different factors. For admission to TRU you will need:

- A minimum of two Advanced (A) level courses and two Advanced Subsidiary (AS) level courses or
- A minimum of three A level courses and two Ordinary (O) level subjects
- Completion of O levels (university preparation courses will need to be completed at TRU)
- Math and English A Level completion is required. Otherwise University Preparation or upgrade will be required where applicable.

## GCES Advanced level (A-level exams)

Transfer credit to arts, science, or business programs are available for approved A-level courses with a passing grade of A or B. To transfer credits, you must provide official GCE transcripts of A-level courses.

## General Education Development (GED) test

GED is an accepted high-school equivalent for admission to TRU under the following conditions:

- Must be at least 17 years of age
- Will need IELTS score
- Will need to take Accuplacer math assessment at TRU

## Transfer credit

If you have completed courses at another recognized post-secondary institution, you may be able to transfer those courses to TRU.

Once your study permit is approved and prior to your arrival at TRU, you must provide original transcripts or attested copies from the respective Registrar and course outlines (syllabus); otherwise you may not be eligible for transfer credit in your first semester. Transcripts and course outlines must be officially translated into English.

[tru.ca/transfercredits-international](http://tru.ca/transfercredits-international)

# SCHOLARSHIPS

For more information visit [truworld.ca/scholarships](http://truworld.ca/scholarships)

## International Athletic Scholarships

Considered for students on TRU's varsity sports teams.



## Engineering Scholarships

International students accepted and enrolled in TRU's two-year engineering transfer program will be considered.



## Jorge Campos Award for Mexican Citizens

This scholarship is open to Mexican citizens currently enrolled in a full-time program of studies in Mexico.



## Scholarships for US Citizens

US citizens admitted to a TRU undergraduate program of two years or longer are eligible for a \$2,000 CAD scholarship.



## Diversity Scholarships

TRU offers global diversity scholarships to new international students that demonstrate excellent academics and are from countries that are underrepresented on campus. To be considered, students should meet one of the following: 3.0 GPA or 6.5 IELTS or 88 TOEFL iBT.



## Scholarships for Residents of the Bahamas

Students from the Bahamas entering an undergraduate program in the Faculty of Adventure, Culinary Arts and Tourism or the School of Business and Economics will automatically be considered to receive a \$7,500 CAD award. One student is selected each year.



## TRU Academic Merit Scholarship

Open to all international students who graduate from a Canadian high school with a minimum GPA 73% in Grade 12. Applicable to any undergraduate program. Is valid for one academic year following high-school graduation.



## International Social Media Ambassador Awards

A limited number of awards are available for international and Canadian students interested in promoting TRU globally as a study destination.



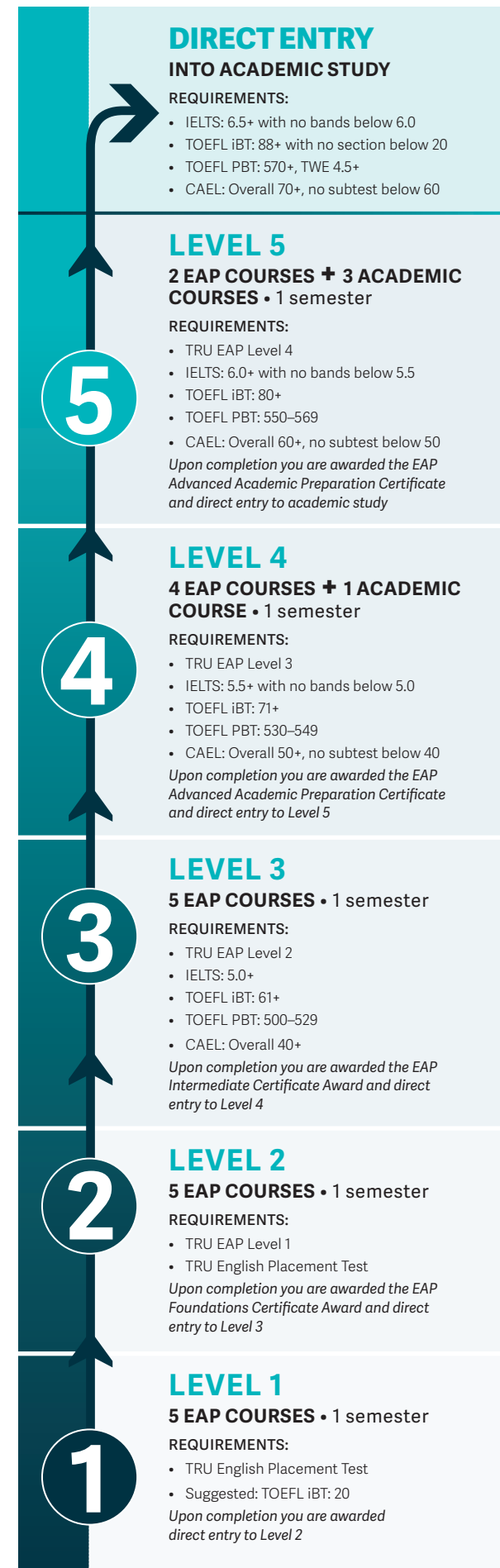
## Academic Excellence Award

To be considered, students must have a minimum GPA of 86% (A) during last year of school/college/university. Applicable to any undergraduate program.



## Exceptional Student Award

To be considered, students must have a minimum GPA of 80% (A-) during last year of high school/college/university and gain direct entry to academic studies (IELTS 6.5+).



# ENGLISH LANGUAGE UPGRADES AND U-PREP

TRU offers English for Academic Purposes (EAP) and University preparation (U-prep). Our EAP program provides quality language training for students who plan to go on to post-secondary study, focusing on English for academic purposes.

Each of the five levels of TRU's EAP program take one semester to complete. Students with no official test score will take an English Placement Test (EPT) upon arrival at TRU and will be placed in the appropriate level of English language study as indicated in the chart below. Students with an official test score can enter EAP or academic courses without taking the TRU EPT. Please refer to the chart for entry levels.

**Note:** To secure registration for the courses you need, please submit your English test scores two months before arriving at TRU.

## Academic requirements

- Secondary school completion (high school graduation)
- Official transcripts from all previous post-secondary institutions (if applicable)
- Other requirements vary by program
- For detailed requirements, please refer to pages 24-36
- For English requirements and exemptions, go to [tru.ca/englishrequirements](http://tru.ca/englishrequirements)



## The TRU EAP Advantage

1. English Placement Test (EPT) available
2. IELTS and TOEFL scores are accepted
3. Academic EAP designed for university preparation
4. Can combine EAP and academic courses for credit in Levels 4 and 5
5. 20 hours of classroom instruction per week
6. Language labs and activities



We accept more test results, for more details visit [tru.ca/eap](http://tru.ca/eap)

## Programs & Admission Requirements

# ADVENTURE, CULINARY ARTS AND TOURISM

LEARN MORE ▶



Please refer to [truworld.ca/programs](http://truworld.ca/programs) for the most up-to-date programs and admission requirements.

PROGRAM NAME	MINIMUM REQUIREMENTS	SAMPLE COURSES	SAMPLE JOBS
<p><b>Post-Baccalaureate Diploma in Tourism Destination Development</b></p> <p>Build upon your undergraduate degree with a focus on tourism destination development — for career advancement, career change, professional development or the pursuit of life-long learning. This post-baccalaureate can be completed in two years.</p> <p><a href="http://tru.ca/tourism/post-baccalaureate-diplomas">tru.ca/tourism/post-baccalaureate-diplomas</a></p>	<ul style="list-style-type: none"> <li>A bachelor's degree</li> <li>All English 12 (73%), or IELTS 6.5, or equivalent</li> </ul> <p><b>Limited seats</b></p>	<ul style="list-style-type: none"> <li>Destination Marketing Organizations</li> <li>Community and Cultural Issues in Tourism</li> <li>Tourism and Sustainable Development</li> </ul>	<ul style="list-style-type: none"> <li>Event Coordinator/Manager</li> <li>Destination Marketing Manager</li> <li>Tourism Development Officer</li> </ul>
<p><b>Bachelor of Tourism Management</b></p> <p>Become a leader and manager in the expanding field of tourism. The BTM focuses on key issues in local, regional, national and international tourism, with opportunities for international experience through study abroad and field schools. Gain the skills and confidence to develop your own tourism business and fill industry demand for managers. Receive a Tourism Management Diploma after two years.</p> <p><b>Concentrations:</b> Adventure Studies, Festivals &amp; Events, Innovation &amp; Entrepreneurship, Resort Experience</p> <p><a href="http://tru.ca/btm">tru.ca/btm</a></p>	<ul style="list-style-type: none"> <li>All English 12 (73%) or IELTS 6.5, or equivalent</li> <li>Math 11 (60%) or equivalent</li> </ul> <p><b>Limited seats</b></p>	<ul style="list-style-type: none"> <li>Culture, History, and Geography</li> <li>Destination Marketing</li> <li>Hospitality Law</li> <li>People, Places, and the Toured Landscape</li> <li>Environmental Issues in Tourism</li> </ul>	<ul style="list-style-type: none"> <li>Tourist Information Centre Manager</li> <li>Travel Agency Manager</li> <li>Hotel Manager</li> <li>Event Organizer</li> <li>Marketing Executive</li> </ul>
<p><b>Adventure Guide Diploma</b></p> <p>Setting the standard around the world for a broad spectrum of wilderness guide training, this intensive program will prepare you for exciting leadership positions in outdoor skills instruction and guiding. The field portion of your classes access BC's exceptional recreational resources for whitewater and ocean pursuits, climbing and skiing.</p> <p><a href="http://tru.ca/adventure">tru.ca/adventure</a></p>	<ul style="list-style-type: none"> <li>All English 12 (67%) or IELTS 6.5, or equivalent</li> <li>Math 11 (67%) or equivalent</li> <li>Completed Adventure Studies application form</li> <li>19 years of age by start of program</li> </ul> <p><b>Limited seats</b></p>	<ul style="list-style-type: none"> <li>Search and Rescue Management</li> <li>Expedition Planning and Leadership</li> <li>The Adventure Tourism Industry</li> <li>The Business of Adventure</li> </ul>	<ul style="list-style-type: none"> <li>Ski Instructor</li> <li>Avalanche Technician</li> <li>Hiking Guide</li> <li>SAR Team Member</li> <li>Sea Kayak Guide</li> </ul>
<p><b>Events &amp; Conventions Management Diploma</b></p> <p>Apply your creativity and keen eye for detail toward a career in event management. This program provides a practical overview of the functions, skills and knowledge required to successfully plan, organize, manage, promote and evaluate a festival, convention, tradeshow or special event.</p> <p><a href="http://tru.ca/ecm">tru.ca/ecm</a></p>	<ul style="list-style-type: none"> <li>All English 12 (73%) or IELTS 6.5, or equivalent</li> <li>Math 11 (60%) or equivalent</li> </ul> <p><b>Limited seats</b></p>	<ul style="list-style-type: none"> <li>Catering and Service Management</li> <li>Managing Festivals and Events</li> <li>Fundraising for Non-Profit Organizations</li> </ul>	<ul style="list-style-type: none"> <li>Conference Planner</li> <li>Event Planner</li> <li>Festival Organizer</li> <li>Trade Show Planner</li> <li>Convention Coordinator</li> </ul>
<p><b>Resort &amp; Hotel Management Diploma</b></p> <p>Get what you need to go places in the hospitality industry as a tourism professional. A blend of theory and hands-on learning gives you the technical and managerial skills you need to work in the hotel and resort industry in Canada and abroad.</p> <p><a href="http://tru.ca/rhm">tru.ca/rhm</a></p>	<ul style="list-style-type: none"> <li>All English 12 (73%) or IELTS 6.5, or equivalent</li> <li>Foundations of Math 11 (60%) or equivalent</li> </ul> <p><b>Limited seats</b></p>	<ul style="list-style-type: none"> <li>Organizational Leadership in Tourism</li> <li>Hospitality Law</li> <li>Resort and Hotel Operations</li> <li>Hotel Resources Management</li> </ul>	<ul style="list-style-type: none"> <li>Hotel General Manager</li> <li>Sales Manager</li> <li>Food and Beverage Manager</li> </ul>
<p><b>Sport Event Management Diploma</b></p> <p>Develop your business skills and event management expertise. Learn to organize and market sports events, recruit and motivate volunteers, and how to raise funds.</p> <p><a href="http://tru.ca/sem">tru.ca/sem</a></p>	<ul style="list-style-type: none"> <li>All English 12 (73%) or IELTS 6.5, or equivalent</li> <li>Math 11 (60%) or equivalent</li> </ul> <p><b>Limited seats</b></p>	<ul style="list-style-type: none"> <li>The World of Events</li> <li>Staging Special Events</li> <li>Sport Event Marketing</li> <li>Field Experience</li> </ul>	<ul style="list-style-type: none"> <li>Entrepreneur</li> <li>Sports Teams Manager</li> <li>Lifestyle/Sporting Event Coordinator</li> <li>Fundraising/Marketing Manager</li> </ul>

### Tourism Management Diploma

Explore your options with a two-year diploma that gives you a good sampling of the specialties you can take in tourism management. Students enrolled in Bachelor of Tourism Management who wish to exit the program upon completion of Year 2 can apply for this diploma.

[tru.ca/tourism](http://tru.ca/tourism)

- All English 12 (73%) or IELTS 6.5, or equivalent
- Math 11 (60%) or equivalent

**Limited seats**

- Marketing and Customer Service
- People, Places, and the Toured Landscape
- Environmental Issues in Tourism

- Event Manager
- Hotel and Resort Manager
- Travel Counsellor

### Adventure Guide Certificate

This entry-level, eight-month program combines classroom instruction with courses in canoeing, rock climbing, ice climbing, mountaineering, whitewater kayaking and more.

[tru.ca/adventure](http://tru.ca/adventure)

- All English 12 (67%) or IELTS 6.5, or equivalent
- Math 11 (67%) or equivalent
- 19 years of age by start of program

**Limited seats**

- Wilderness Travel
- Mountaineering/Skiing
- Swift Water Rescue Technician
- Ocean Surfing

- Ski Instructor
- Sea Kayak Guide
- Canoe Instructor
- Raft Guide Technician
- Ocean Surfing

### Professional Cook 1 & 2 (Red Seal)

Learn the fundamentals and the artistry of food preparation in a hands-on environment that includes practical experience producing international gourmet fare for our on-campus public cafeteria. Earn Professional Cook 1 and 2 certifications in three semesters (44 weeks), with the option to complete a Professional Cook 3 Apprenticeship (Red Seal).

[tru.ca/culinary](http://tru.ca/culinary)

- Grade 10, or equivalent
- Food Safe Level 1
- Successful Entry Assessment: see [tru.ca/assessment](http://tru.ca/assessment)

**Limited seats**

- Safety and Sanitary Standards
- Menu Planning
- Ingredients and Nutritional Properties
- Production Procedures

- Baker
- Cook/Chef
- Chocolatier
- Restaurant Manager
- Caterer

\* Students who do not meet direct entry requirements to join Tourism Faculty programs will be offered a seat in the Pre-Tourism program. This program allows students to do all required upgrades to qualify for Tourism.



# ARTS, HUMANITIES AND SOCIAL SCIENCE

LEARN MORE



PROGRAM NAME	MINIMUM REQUIREMENTS	SAMPLE COURSES	SAMPLE JOBS
<p><b>Master of Arts in Human Rights and Social Justice</b></p> <p>With TRU's interdisciplinary Master of Arts in Human Rights and Social Justice, you can become a leader in the advancement of a just society — locally and globally.</p> <p><a href="http://tru.ca/ma">tru.ca/ma</a></p>	<ul style="list-style-type: none"> <li>3 or 4-year undergraduate degree or equivalent (min GPA 3.33 on a scale of 4.33 in the last 60 credits) in a related discipline such as sociology, political science, history or anthropology</li> <li>Lower GPA may be considered for applicants with related field experience</li> <li>IELTS 7.0, no section below 6.5 or equivalent</li> <li>A Statement of intent</li> <li>CV or resumé</li> </ul>	<ul style="list-style-type: none"> <li>Law, Human Rights and Theories of Justice</li> <li>Settler Colonialism: Decolonization and Responsibility</li> <li>Problem Solving in the Field: Study Techniques and Methods</li> <li>Body Rights: Systems and Social Movements</li> </ul>	<ul style="list-style-type: none"> <li>Provincial, national, or international NGOs</li> <li>Various levels of government</li> <li>Private sector companies adhering to corporate social responsibility</li> </ul>
<p><b>Bachelor of Arts</b></p> <p>The BA degree offers a variety of majors and minors while ensuring a comprehensive foundation in the liberal arts. Flexible with opportunities for research, Co-op, field schools and study abroad. Cultivate skills like communication, critical thinking, teamwork and leadership, and apply your knowledge in real-world settings.</p> <p><b>Majors:</b> Economics, Economics &amp; Math, Economic &amp; Political Studies, English, Geography &amp; Environmental Studies, History, Math, Philosophy, Psychology, Sociology, Theatre</p> <p><b>Minors:</b> Creative Writing, Environmental Economics &amp; Sustainable Development, Geography, Management, Political Studies, Visual Arts</p> <p><a href="http://tru.ca/ba">tru.ca/ba</a></p>	<ul style="list-style-type: none"> <li>All English 12 (73%) or IELTS 6.5, or equivalent</li> </ul>	<ul style="list-style-type: none"> <li>Introduction to Psychology</li> <li>Race and Ethnic Relations</li> <li>Labour Economics</li> <li>Social and Political Thought</li> </ul>	<ul style="list-style-type: none"> <li>Project Coordinator</li> <li>Researcher</li> <li>Public Relations Specialist</li> <li>Teacher</li> <li>Counsellor</li> <li>Communications Specialist</li> <li>Actor</li> <li>Historian</li> </ul>
<p><b>Bachelor of Communication and Digital Journalism</b></p> <p>Embrace studies in public and strategic communication, media relations, media and technology, multimedia storytelling, digital journalism, visual communication, and digital design. With this degree, you will be ready to navigate flexible opportunities as a digital journalist, a public relations specialist, a media analyst or a content producer.</p> <p><b>Majors:</b> Digital Journalism, Public Relations, Media Studies</p> <p><a href="http://tru.ca/bcdj">tru.ca/bcdj</a></p>	<ul style="list-style-type: none"> <li>All English 12 (73%) or IELTS 6.5, or equivalent</li> </ul>	<ul style="list-style-type: none"> <li>Advanced Professional Communication</li> <li>Introduction to Reporting Skills and Techniques</li> <li>Online Journalism</li> </ul>	<ul style="list-style-type: none"> <li>Digital journalist</li> <li>Public relations specialist</li> <li>Media analyst</li> <li>Content producer</li> </ul>
<p><b>Bachelor of Interdisciplinary Studies</b></p> <p>Explore your interests without concentrating in a specific major in the BIS degree program. Find your passions through a varied learning experience and customize your curriculum, with opportunities for Co-op.</p> <p><a href="http://tru.ca/bis">tru.ca/bis</a></p>	<ul style="list-style-type: none"> <li>Third-year entry</li> <li>All English 12 (73%) or IELTS 6.5, or equivalent</li> </ul> <p><b>See <a href="http://tru.ca/calendar-for-admission-requirements">tru.ca/calendar for admission requirements</a></b></p> <p><b>Competitive admission</b></p>	<p><i>Courses will vary depending on your interests.</i></p>	<p><i>Job options are endless depending on your choice of courses.</i></p>
<p><b>Post-Baccalaureate Diploma in Politics and International Studies</b></p> <p>Develop an appreciation and understanding of the ways in which economic and political phenomena shape our society. Learn how to apply a quantitative analysis of economics to assess the effectiveness of our modern laws and policies..</p>	<ul style="list-style-type: none"> <li>Third-year entry or Bachelor's degree (any field)</li> <li>All English 12 (73%) or IELTS 6.5, no section below 6.0</li> </ul> <p><b>See <a href="http://tru.ca/calendar-for-admission-requirements">tru.ca/calendar for admission requirements</a></b></p> <p><b>Competitive admission</b></p>	<ul style="list-style-type: none"> <li>Introduction to Cultural Anthropology</li> <li>Canadian Foreign Policy</li> <li>Globalization</li> <li>Environmental Issues and Policies</li> </ul>	<ul style="list-style-type: none"> <li>Social policy researchers</li> <li>Managers in social, community and correctional services</li> <li>Marketing researchers and consultant</li> </ul>

# BUSINESS, ECONOMICS AND MANAGEMENT

LEARN MORE



PROGRAM NAME	MINIMUM REQUIREMENTS	SAMPLE COURSES	SAMPLE JOBS
<p><b>Master of Business Administration</b></p> <p>The TRU MBA is designed to meet the needs of our students, who can customize their learning experience with maximum flexibility and unparalleled choice. Three program completion options: graduate project, graduate thesis and course-based completion project.</p> <p><a href="http://tru.ca/mba">tru.ca/mba</a></p>	<ul style="list-style-type: none"> <li>3 or 4-year undergraduate degree or equivalent (min GPA 3.0 on a scale of 4.33 in the last 60 credits)</li> <li>IELTS 7.0, no section below 6.5 or equivalent</li> </ul> <p><b>Competitive admission</b></p>	<ul style="list-style-type: none"> <li>Strategic Management</li> <li>Decision Analysis and Management</li> <li>Innovation and Entrepreneurship</li> <li>Research Methods, Preparation and Presentation</li> </ul>	<ul style="list-style-type: none"> <li>Management Consultant</li> <li>Investment Banker</li> <li>Management Analyst</li> <li>Marketing Manager</li> </ul>
<p><b>Master of Environmental Economics and Management</b></p> <p><i>OR</i></p> <p><b>Master of Science in Environmental Economics and Management</b></p> <p>A course-based program providing graduates with a broad knowledge of the business environment, advanced management skills and specialized knowledge in environmental economics and sustainability.</p> <p>MScEEM will complete their studies through a graduate thesis or project.</p> <p><a href="http://tru.ca/meem">tru.ca/meem</a></p>	<ul style="list-style-type: none"> <li>3 or 4-year undergraduate degree or equivalent (min GPA 3.0 on a scale of 4.33 in the last 60 credits)</li> <li>IELTS 7.0, no section below 6.5 or equivalent</li> <li>Interview and 2 references required (TRU to provide forms)</li> <li>Quantitative and computing skills</li> <li>Letter of intent and CV</li> </ul> <p><b>Competitive admission</b></p>	<ul style="list-style-type: none"> <li>Policy and Regulation for Sustainable Management</li> <li>Principles of Environmental Economics and Natural Resource Economics</li> <li>Applied Macroeconomics for Sustainable Management</li> <li>Sustainable Macroeconomic Development</li> <li>Sustainable Community Economic Development</li> </ul>	<ul style="list-style-type: none"> <li>Commodities Broker</li> <li>Environmental Coordinator</li> <li>Sustainability Manager</li> <li>Environmental Technical Salesperson</li> <li>Energy Auditor</li> <li>Environmental Planner</li> </ul>
<p><b>Post-Baccalaureate Diploma in Accounting</b></p> <p>Enables students to create, examine and evaluate financial documents. Students will complete a variety of courses such as statistics, income taxation, economics, financial accounting and management accounting.</p> <p><a href="http://tru.ca/business/post-bacc">tru.ca/business/post-bacc</a></p>	<ul style="list-style-type: none"> <li>ALL English 12 (73%) or IELTS 6.5, or equivalent</li> <li>Math 12 or MATH 0610 or MATH 1000 (67%) or equivalent</li> <li>ENGL 1100 (67%) or equivalent</li> <li>A bachelor's degree</li> </ul>	<ul style="list-style-type: none"> <li>Advanced Financial Accounting</li> <li>Assurance</li> <li>Intermediate Management Accounting</li> </ul>	<ul style="list-style-type: none"> <li>Machine Processing Accountant</li> <li>Tax Analyst</li> <li>Financial Control Officer</li> </ul>
<p><b>Post-Baccalaureate Diploma in Business Administration</b></p> <p>Prepares mature students with a general business or non-business degree to build a strong foundation in all areas of business.</p> <p><a href="http://tru.ca/business/post-bacc">tru.ca/business/post-bacc</a></p>	<ul style="list-style-type: none"> <li>All English 12 (73%) or IELTS 6.5, or equivalent</li> <li>Math 12 or MATH 0610 or MATH 1000 (67%) or equivalent</li> <li>ENGL 1100 (67%) or equivalent</li> <li>A bachelor's degree</li> </ul>	<ul style="list-style-type: none"> <li>Management Information Systems</li> <li>Commercial Law</li> <li>Strategic Management</li> </ul>	<ul style="list-style-type: none"> <li>Appraiser</li> <li>Commercial Lender</li> <li>Merchandising Technician</li> </ul>
<p><b>Post-Baccalaureate Diploma in Economics</b></p> <p>Students acquire essential knowledge of Canadian financial markets, economic analysis, forecasting, sustainable economic development, public finance and other disciplines that prepare students to become professionals in the economics sector.</p> <p><a href="http://tru.ca/business/post-bacc">tru.ca/business/post-bacc</a></p>	<ul style="list-style-type: none"> <li>All English 12 (73%) or IELTS 6.5, or equivalent</li> <li>Math 12 or MATH 0610 or MATH 1000 (67%) or equivalent</li> <li>ENGL 1100 (67%) or equivalent</li> <li>A bachelor's degree</li> </ul>	<ul style="list-style-type: none"> <li>Economics of Climate Change</li> <li>International Economics</li> <li>Government and Business</li> <li>International Financial Markets</li> </ul>	<ul style="list-style-type: none"> <li>Researching and analyzing data and trends</li> <li>Municipal sector</li> <li>Banks</li> <li>Private sector</li> </ul>
<p><b>Post-Baccalaureate Diploma in Entrepreneurship</b></p> <p>Entrepreneurship majors will learn to research new business ideas, prepare formal business plans, secure initial financing and manage small businesses on an ongoing basis.</p> <p><a href="http://tru.ca/business/post-bacc">tru.ca/business/post-bacc</a></p>	<ul style="list-style-type: none"> <li>All English 12 (73%) or IELTS 6.5, or equivalent</li> <li>Math 12 or MATH 0610 or MATH 1000 (67%) or equivalent</li> <li>ENGL 1100 (67%) or equivalent</li> <li>A bachelor's degree</li> </ul>	<ul style="list-style-type: none"> <li>All Business Finance</li> <li>New Venture Creation</li> <li>Small Business Management</li> </ul>	<ul style="list-style-type: none"> <li>Commercial Lending Officer</li> <li>Venture Capitalist</li> <li>Franchisee</li> </ul>

<p><b>Post-Baccalaureate Diploma in Finance</b></p> <p>Students acquire a foundation in finance-related subjects including financial management, financial accounting, investments and equity analysis.</p> <p><a href="http://tru.ca/business/post-bacc">tru.ca/business/post-bacc</a></p>	<ul style="list-style-type: none"> <li>All English 12 (73%) or IELTS 6.5, or equivalent</li> <li>Math 12 or MATH 0610 or MATH 1000 (67%) or equivalent</li> <li>ENGL 1100 (67%) or equivalent</li> <li>A bachelor's degree</li> </ul>	<ul style="list-style-type: none"> <li>Risk Management and Financial Engineering</li> <li>Portfolio Management</li> <li>Forecasting in Business and Economics</li> </ul>	<ul style="list-style-type: none"> <li>Financial Auditor</li> <li>Financial and Investment Analyst</li> <li>Securities Agent</li> </ul>
<p><b>Post-Baccalaureate Diploma in Human Resource Management</b></p> <p>Topics include leadership, teamwork in organizations, planning and staffing, employment law and organizational development.</p> <p><a href="http://tru.ca/business/post-bacc">tru.ca/business/post-bacc</a></p>	<ul style="list-style-type: none"> <li>All English 12 (73%) or IELTS 6.5, or equivalent</li> <li>Math 12 or MATH 0610 or MATH 1000 (67%) or equivalent</li> <li>ENGL 1100 (67%) or equivalent</li> <li>A bachelor's degree</li> </ul>	<ul style="list-style-type: none"> <li>Creativity and Innovation</li> <li>Human Resource Management</li> <li>Negotiation and Conflict Resolution</li> </ul>	<ul style="list-style-type: none"> <li>Recruiting Manager</li> <li>Director of Employee Engagement</li> <li>Branch Manager</li> </ul>
<p><b>Post-Baccalaureate Diploma in Economics and Political Studies</b></p> <p><a href="http://tru.ca/business/post-bacc">tru.ca/business/post-bacc</a></p>	<ul style="list-style-type: none"> <li>All English 12 (73%) or IELTS 6.5, or equivalent</li> <li>Math 12 or MATH 0610 or MATH 1000 (67%) or equivalent</li> <li>ENGL 1100 (67%) or equivalent</li> <li>A bachelor's degree</li> </ul>	<ul style="list-style-type: none"> <li>Canadian Financial Markets</li> <li>Government Business</li> <li>Canadian Foreign Policy</li> <li>Economic Analysis of Law</li> </ul>	<ul style="list-style-type: none"> <li>Municipal sector</li> <li>Banks</li> <li>Private sector</li> </ul>
<p><b>Post-Baccalaureate Diploma in International Business</b></p> <p>Prepares students for positions as managers and entrepreneurs in the global economy.</p> <p><a href="http://tru.ca/business/post-bacc">tru.ca/business/post-bacc</a></p>	<ul style="list-style-type: none"> <li>All English 12 (73%) or IELTS 6.5, or equivalent</li> <li>Math 12 or MATH 0610 or MATH 1000 (67%) or equivalent</li> <li>ENGL 1100 (67%) or equivalent</li> <li>A bachelor's degree</li> </ul>	<ul style="list-style-type: none"> <li>Global Management</li> <li>International Trade Law and Logistics</li> <li>Global Entrepreneurship</li> </ul>	<ul style="list-style-type: none"> <li>Foreign Affairs Specialist</li> <li>Corporate Trainer</li> <li>International Account Manager</li> </ul>
<p><b>Post-Baccalaureate Diploma in Marketing</b></p> <p>Students acquire a foundation in marketing-related subjects including consumer behaviour, marketing research, strategy, e-commerce, professional selling, brand management and forecasting.</p> <p><a href="http://tru.ca/business/post-bacc">tru.ca/business/post-bacc</a></p>	<ul style="list-style-type: none"> <li>All English 12 (73%) or IELTS 6.5, or equivalent</li> <li>Math 12 or MATH 0610 or MATH 1000 (67%) or equivalent</li> <li>ENGL 1100 (67%) or equivalent</li> <li>A bachelor's degree</li> </ul>	<ul style="list-style-type: none"> <li>Advanced Marketing Research</li> <li>International Marketing</li> <li>Services Marketing</li> </ul>	<ul style="list-style-type: none"> <li>Digital Marketing Manager</li> <li>Campaign Manager</li> <li>Marketing Director</li> </ul>
<p><b>Post-Baccalaureate Diploma in Mathematics and Economics</b></p> <p>This diploma is of interest to students who have a non-business degree and want to return to university for one or two years to acquire a specialty in a functional area of business. Students with a first degree in business, but who want to change their area of focus, may complete a post-baccalaureate diploma as well.</p> <p><a href="http://tru.ca/business/post-bacc">tru.ca/business/post-bacc</a></p>	<ul style="list-style-type: none"> <li>All English 12 (73%) or IELTS 6.5, or equivalent</li> <li>Math 12 or MATH 0610 or MATH 1000 (67%) or equivalent</li> <li>ENGL 1100 (67%) or equivalent</li> <li>A bachelor's degree</li> </ul>	<ul style="list-style-type: none"> <li>Econometrics</li> <li>Introduction to Linear Programming</li> <li>Modelling of Discrete Optimization Problems</li> <li>Applied Regression Analytics</li> </ul>	<ul style="list-style-type: none"> <li>Economist</li> <li>Financial Risk Analyst</li> <li>Data Analyst</li> <li>Financial Planner</li> <li>Economic Researcher</li> <li>Financial Consultant</li> <li>Investment Analyst</li> </ul>
<p><b>Post-Baccalaureate Diploma in Supply Chain Management</b></p> <p>Program focuses on fundamental aspects of supply chain management like logistics and transportation, operations management, commercial law and global management.</p> <p><a href="http://tru.ca/business/post-bacc">tru.ca/business/post-bacc</a></p>	<ul style="list-style-type: none"> <li>All English 12 (73%) or IELTS 6.5, or equivalent</li> <li>Math 12 or MATH 0610 or MATH 1000 (67%) or equivalent</li> <li>ENGL 1100 (67%) or equivalent</li> <li>A bachelor's degree</li> </ul>	<ul style="list-style-type: none"> <li>Web-Enabled Business</li> <li>Operations Management</li> <li>Procurement Management</li> </ul>	<ul style="list-style-type: none"> <li>Business Development Manager</li> <li>Inventory Manager</li> <li>Manufacturing Manager</li> </ul>

**Post-Baccalaureate Diplomas** provide mature students with general business or non-business degrees with a specialization in a functional area of business, to enhance their employment opportunities. International students can learn English while experiencing Canadian culture and studying in a compressed format.

*Minimum requirements: Students may commence their studies while they upgrade their mathematics and English*

<p><b>Bachelor of Business Administration</b></p> <p>Gain a foundation in business in the first two years of the flexible BBA program, then find your passion in a choice of majors and minors. Co-op and study abroad opportunities are available to enhance your career options. Double degree option with Computing Science is available.</p> <p><b>Majors:</b> Accounting, Economics, Entrepreneurship, Finance, Human Resource Management, International Business, Marketing, Supply Chain Management</p> <p><b>Minors:</b> Environmental Economics &amp; Sustainable Development, Financial Markets &amp; Institutions, Financial Services, Leadership, Management Information Systems, Project Management</p> <p><a href="http://tru.ca/bba">tru.ca/bba</a></p> <p><b>DOUBLE DEGREES:</b> Bachelor of Business Administration (BBA) and Bachelor of Computing Science (BCS), Bachelor of Business (BBA) and Bachelor of Arts (BA)</p> <p><a href="http://tru.ca/business/degrees/double_degree">tru.ca/business/degrees/double_degree</a></p>	<ul style="list-style-type: none"> <li>All English 12 (73%) or IELTS 6.5, or equivalent</li> <li>Math 12 (67%) or equivalent</li> </ul>	<ul style="list-style-type: none"> <li>International Marketing</li> <li>Small Business Management</li> <li>Logistics and Operations</li> <li>Macro and Micro Economics</li> <li>Financial Accounting</li> <li>Employment Law</li> <li>Global Entrepreneurship</li> <li>Consumer Behaviour</li> </ul>	<ul style="list-style-type: none"> <li>Taxation Manager</li> <li>Investment Dealer</li> <li>Industrial Relations Officer</li> <li>Foreign Trade Consultant</li> <li>Advertising Account Executive</li> <li>Venture Capitalist</li> <li>Supply Chains System Manager</li> </ul>
<p><b>Accounting Technician Diploma</b></p> <p>Develop the skills to become an accounting para-professional working alongside professional accountants in industry and public practice. Your diploma credits count towards completion of the Bachelor of Business Administration.</p> <p><i>Exit Certificate after first year: Business Foundations Certificate</i></p> <p><a href="http://tru.ca/accounting">tru.ca/accounting</a></p>	<ul style="list-style-type: none"> <li>All English 12 (73%) or IELTS 6.5, or equivalent</li> <li>Math 12 (67%) or equivalent</li> <li>Completion of Administrative Assistant Certificate, or equivalent</li> </ul>	<ul style="list-style-type: none"> <li>Financial Management</li> <li>Income Taxation</li> <li>Accounting 1 &amp; 2</li> <li>Introduction to Probability and Statistics</li> </ul>	<ul style="list-style-type: none"> <li>Secretary</li> <li>Sales Assistant</li> <li>Administrative Assistant</li> <li>Research Assistant</li> </ul>
<p><b>Associate of Commerce &amp; Business Administration Diploma</b></p> <p>This certificate allows you to complete the lower level requirements of a business degree at TRU, before transferring to another university such as Simon Fraser University or University of British Columbia for your third and fourth years.</p> <p><a href="http://tru.ca/business/certificates_diplomas">tru.ca/business/certificates_diplomas</a></p>	<ul style="list-style-type: none"> <li>All English 12 (73%) or IELTS 6.5, or equivalent</li> <li>Math 12 (67%) or equivalent</li> <li>Completion of Administrative Assistant Certificate, or equivalent</li> </ul>	<ul style="list-style-type: none"> <li>Economics</li> <li>Financial Accounting</li> <li>Organizational Behaviour</li> </ul>	<ul style="list-style-type: none"> <li>Administrative Assistant</li> <li>Sales Coordinator</li> <li>Office Clerk</li> </ul>
<p><b>Management Diploma</b></p> <p>Develop your skills in areas such as accounting, oral and written communications, problem-solving, marketing, human relations, economics, information systems and business ethics. Your diploma credits count towards completion of the Bachelor of Business Administration.</p> <p><i>Exit Certificate after first year: Business Foundations Certificate</i></p> <p><a href="http://tru.ca/mgmt">tru.ca/mgmt</a></p>	<ul style="list-style-type: none"> <li>All English 12 (73%) or IELTS 6.5, or equivalent</li> <li>Math 12 (67%) or equivalent</li> </ul> <p><b>Upgrading available while in the program</b></p>	<ul style="list-style-type: none"> <li>Organizational Behaviour</li> <li>Employee and Labour Relations</li> <li>International Business</li> </ul>	<ul style="list-style-type: none"> <li>Customer Relations Coordinator</li> <li>Insurance Clerk</li> <li>Cost Administrator</li> <li>Employment Counsellor</li> </ul>

**Diplomas:** Upgrading available while in the program.



# EDUCATION, SOCIAL WORK, AND HUMAN SERVICES

LEARN MORE ▶



PROGRAM NAME	MINIMUM REQUIREMENTS	SAMPLE COURSES	SAMPLE JOBS
<p><b>Master of Education</b></p> <p>The Master of Education program is designed for the working professional involved in education and for students who wish to assume positions as educational leaders and researchers, or who work in education, health care, private industry and government.</p> <p>Consisting of five core courses plus five courses from one focus subject such as educational leadership, curriculum, counselling, or inclusive and special education. The MEd is completed through a capstone course, though it is possible to complete the program by final project or thesis if a supervisor is available.</p> <p><a href="http://tru.ca/med">tru.ca/med</a></p>	<ul style="list-style-type: none"> <li>3 or 4-year undergraduate degree or equivalent (min GPA 3.0 on a scale of 4.33 in the last 60 credits)</li> <li>IELTS 6.5, no section below 6.5 or equivalent</li> </ul> <p><b>Limited seats</b></p>	<ul style="list-style-type: none"> <li>Legal Issues in Education</li> <li>Multimedia in the Curriculum</li> <li>Theories in Counselling</li> <li>Intervention and Programming in Inclusive Education</li> </ul>	<ul style="list-style-type: none"> <li>Instructional Technologist</li> <li>Educational Superintendent</li> <li>Counsellor</li> <li>Academic Dean</li> </ul>
<p><b>Graduate Certificate in Educational Studies</b></p> <p>The Graduate Certificate in Educational Studies (GCES) is designed to help develop the English language and academic skills to successfully meet the MEd entry requirements.</p> <p><a href="http://tru.ca/edsw/education/gces">tru.ca/edsw/education/gces</a></p>	<ul style="list-style-type: none"> <li>3 or 4-year undergraduate degree or equivalent (min GPA 2.67 on a scale of 4.33 in the last 60 credits)</li> <li>EILTS 6.0, no section below 5.5 or equivalent</li> <li>3 references and letter of intent</li> </ul>	<ul style="list-style-type: none"> <li>Legal Issues in Education</li> <li>Multimedia in the Curriculum</li> <li>Theories in Counselling</li> <li>Intervention and Programming in Inclusive Education</li> </ul>	<ul style="list-style-type: none"> <li>Instructional Technologist</li> <li>Educational Superintendent</li> <li>Counsellor</li> <li>Academic Dean</li> </ul>
<p><b>Bachelor of Education – Elementary</b></p> <p>This two-year program prepares students to teach in elementary schools. Graduates obtain their professional teaching certificate from the Ministry of Education, Teacher Regulation Branch (TRB), which qualifies the graduate to teach kindergarten to grade 12 in BC public schools. Graduates can also teach in any province or territory in Canada, and in many other countries.</p> <p><a href="http://tru.ca/edb">tru.ca/edb</a></p>	<ul style="list-style-type: none"> <li>Must be graduate of a four year degree or equivalent (min GPA 2.67 in last 60 credits) normally in arts, fine arts, math, science, music or physical education</li> <li>100 hours volunteer experience</li> <li>All English 12 (73%) or IELTS 6.5, or equivalent</li> </ul> <p><b>Competitive admission</b></p>	<ul style="list-style-type: none"> <li>History of Education</li> <li>Language and Literacy</li> <li>Mathematics</li> <li>Special Education</li> <li>Visual Arts</li> <li>School Organization</li> </ul>	<ul style="list-style-type: none"> <li>Primary School Teacher</li> <li>Youth Worker</li> <li>Community Education Officer</li> <li>Education Administrator</li> <li>Teaching Assistant</li> </ul>



<p><b>Bachelor of Education – Secondary (STEM)</b></p> <p>This one-year (12-month) program prepares students to teach science and mathematics in the context of engineering and technology in secondary school settings. Graduates qualify for a professional teaching certificate from the BC Ministry of Education, Teacher Regulation Branch (TRB), certifying them to teach science and mathematics subjects in any secondary school setting. Graduates often teach in other provinces or territories in Canada and in other countries.</p> <p><a href="http://tru.ca/stem">tru.ca/stem</a></p>	<ul style="list-style-type: none"> <li>3 or 4-year undergraduate degree or equivalent in mathematics or science (Physics, Biology, Chemistry, or General Science) with a 2.67 GPA in the last 60 credits.</li> <li>One teachable major or two teachable minors (courses taught in secondary schools)</li> <li>Successful completion of six credits of English Literature and Composition at any level</li> <li>100 hours of relevant volunteer or paid teaching experience</li> </ul> <p><b>Competitive admission</b></p>	<ul style="list-style-type: none"> <li>History of Education</li> <li>Philosophy of Education</li> <li>Diversity and Inclusive Education</li> <li>Legal Issues</li> <li>Management of Technical Facilities</li> </ul>	<ul style="list-style-type: none"> <li>High School Science Teacher</li> <li>Education Administrator</li> </ul>
<p><b>Bachelor of Social Work</b></p> <p>Learn the skills you need for a rewarding career as a generalist social work practitioner in various fields of practice, such as child welfare, mental health, addictions, women's services, family justice, corrections, health and Indigenous people. The BSW program has an orientation toward social justice, and respect for diversity and social change.</p> <p><a href="http://tru.ca/bsw">tru.ca/bsw</a></p>	<ul style="list-style-type: none"> <li>Third year entry</li> <li>A minimum of 54 credits (60 recommended) with a min GPA of 2.33</li> <li>Human Service diploma or certificate with a minimum GPA of 2.67</li> <li>English 12 (73%) or IELTS 6.5 or equivalent</li> </ul> <p><b>Limited seats</b></p>	<ul style="list-style-type: none"> <li>Theory and Ideology of Social Work</li> <li>Sexual Diversity and Gender Expression</li> <li>Introduction to Disability Studies</li> <li>Family Violence and Social Work Practices</li> </ul>	<ul style="list-style-type: none"> <li>School Social Worker</li> <li>Child Welfare Social Worker</li> <li>Mental Health Social Worker</li> <li>Substance Abuse Social Worker</li> </ul>
<p><b>Early Childhood Education Diploma</b></p> <p>This program provides excellent learning techniques to acquire necessary knowledge and skills to become educators. Completion of ECE Diploma satisfies the requirements of CCFB and BC Government for a license to practice as an Early Childhood Educator.</p> <p><a href="http://tru.ca/ece">tru.ca/ece</a></p>	<ul style="list-style-type: none"> <li>All English 12 (73%) or IELTS 6.5, or equivalent</li> <li>25 hours of volunteer and/or work experience in a licensed child care facility</li> </ul> <p><b>Limited seats</b></p>	<ul style="list-style-type: none"> <li>Child Guidance</li> <li>Introduction to Developmental Psychology: Childhood &amp; Adolescence</li> <li>Curriculum Development</li> </ul>	<ul style="list-style-type: none"> <li>Early Childhood Educator</li> <li>Special Needs Educator</li> <li>Early Literacy Specialist</li> </ul>
<p><b>Human Service Diploma</b></p> <p>Prepare for a helping career with agencies that provide support and assistance to individuals coping with economic disadvantage, mental health issues, developmental, gender and diversity issues, addictions and other challenges. Your certificate credits count towards completion of child and youth care or social work degree programs.</p> <p><a href="http://tru.ca/humanservice">tru.ca/humanservice</a></p>	<ul style="list-style-type: none"> <li>All English 12 (73%) or IELTS 6.5, or equivalent</li> <li>must be 19 years of age before start of program</li> <li>Criminal record check from home country</li> </ul>	<ul style="list-style-type: none"> <li>Introduction to Communications and Helping Relationships</li> <li>Family and Marriage</li> <li>Introduction to First Nations</li> <li>Introduction to Social Work Practice</li> <li>Law and Social Services</li> <li>Advanced Interpersonal Skills/Guided Communications</li> </ul>	<ul style="list-style-type: none"> <li>Work with government or non-profit agencies to support individuals and families with diverse social needs such as economic disadvantage, mental health and substance use issues, and involvement with the justice system.</li> </ul>
<p><b>TESOL Certificate</b></p> <p>Get the knowledge, skills and confidence to start a career teaching English as a second language in Canada or around the world. Teaching English is a great way to collect unforgettable experiences, be in high demand and make a real difference in people's lives. Our program is nationally accredited by TESL Canada.</p> <p><a href="http://tru.ca/tesl">tru.ca/tesl</a></p>	<ul style="list-style-type: none"> <li>IELTS 6.5, no section below 6.5 or equivalent</li> </ul>	<ul style="list-style-type: none"> <li>Curriculum and Instruction</li> <li>Pedagogical Grammar</li> <li>Intercultural Communication Studies</li> <li>TESOL Techniques</li> <li>TESOL Practicum</li> </ul>	<ul style="list-style-type: none"> <li>Program Administrator</li> <li>Program Coordinator</li> <li>Develop and write curricula</li> <li>Teach at universities and colleges</li> <li>Teach globally</li> </ul>

# HEALTH SCIENCES AND NURSING



PROGRAM NAME	MINIMUM REQUIREMENTS	SAMPLE COURSES	SAMPLE JOBS
<p><b>Master of Nursing</b></p> <p>The MN program offers nursing graduates the knowledge, skills and abilities they need for principled and thoughtful leadership through critical and creative approaches that influence innovative change. Graduates will be equipped to meet the demand for advanced nursing roles within complex and dynamic health care systems internationally.</p> <p><a href="http://tru.ca/mn">tru.ca/mn</a></p>	<ul style="list-style-type: none"> <li>3 or 4-year undergraduate degree or equivalent (min GPA 3.0 on a scale of 4.33 in the last 60 credits) preferably in nursing</li> <li>Introductory Statistics 12 (or equivalent) C+</li> <li>Two letters of reference (one academic and one professional)</li> <li>Verification of registration as an active practicing nurse from the regulatory body of the jurisdiction where you live</li> <li>IELTS 7.0, no section below 6.5 or equivalent. Preferred scores: Speaking 7.0, Writing 7.0, Listening 7.5, Reading 6.5</li> </ul> <p><b>Competitive admission</b></p>	<ul style="list-style-type: none"> <li>Knowledge for Advanced Nursing</li> <li>Research in Healthcare</li> <li>Leadership and Managing Change in Healthcare</li> </ul>	<ul style="list-style-type: none"> <li>Research Nurse</li> <li>Nurse Educator</li> <li>Health Care Administrator</li> </ul>
<p><b>Bachelor of Science in Nursing</b></p> <p>This four-year degree program (plus practicum placements) educates students to be competent nurses to work with individuals, families, groups or communities from a health promotion perspective and an ethic of caring. Practice experience occurs in acute care, extended care and intermediate care hospitals, and other community health agencies and homes with options for local, regional, provincial, national and international practicums. Upon completion, graduates are eligible to write the National Council Licensure Examination (NCLEX) and apply for registration with the College of Registered Nurses of BC (CRNBC) to practice as a Registered Nurse (RN).</p> <p><a href="http://tru.ca/nursing/programs/bsn">tru.ca/nursing/programs/bsn</a></p>	<ul style="list-style-type: none"> <li>All English 12 (73%) or IELTS 6.5, or equivalent</li> <li>Foundations of Math 12 or Pre-Calculus 12 (67%) or equivalent</li> <li>Biology 12 (67%) or equivalent</li> <li>Chemistry 11 (67%) or equivalent</li> <li>One additional Science 11 or Science 12 with a minimum (67%) or equivalent</li> </ul> <p><b>Competitive admission</b> <b>Application Deadline</b> January 15</p>	<ul style="list-style-type: none"> <li>Health and Healing</li> <li>Composition</li> <li>Health Care Ethics</li> <li>Consolidated Practice Experience</li> <li>Nursing Research</li> </ul>	<ul style="list-style-type: none"> <li>Medical Intensive Care Nurse</li> <li>Advanced Nurse Practitioner</li> <li>Acute Care Nurse Practitioner</li> <li>Nurse Educator</li> <li>Registered Nurse</li> </ul>
<p><b>Practical Nursing Diploma</b></p> <p>Learn everything you need to deliver effective and empathetic front line patient care. This comprehensive program provides the knowledge, skills, judgement and attitude to perform to the competencies identified by the College of Licensed Practical Nurses of British Columbia.</p> <p>(Williams Lake Campus only)</p> <p><a href="http://tru.ca/nursing/programs/lpn">tru.ca/nursing/programs/lpn</a></p>	<ul style="list-style-type: none"> <li>All English 12 (67%) or IELTS 6.5, or equivalent</li> <li>Foundations of Math 11 (60%) or equivalent</li> <li>Human Anatomy and Physiology for Practical Nurses (67%) or equivalent</li> </ul> <p><b>Next intake:</b> September 2026</p>	<ul style="list-style-type: none"> <li>Anatomy and Physiology</li> <li>Professional Practice</li> <li>Health and Healing</li> <li>Nursing Practice</li> </ul>	<ul style="list-style-type: none"> <li>Ambulance Care Aid</li> <li>Geriatric Nurse</li> <li>Pediatric Nurse</li> <li>Operating Room Nurse</li> </ul>
<p><b>Respiratory Therapy Diploma</b></p> <p>This three-year diploma trains you as a therapist specializing in cardiopulmonary disease prevention and education. Learn to assess and treat disorders of the lungs, heart, and vascular system. Includes a one-year clinical at various hospitals.</p> <p><a href="http://tru.ca/rt">tru.ca/rt</a></p>	<ul style="list-style-type: none"> <li>All English 12 (73%) or IELTS 6.5, or equivalent</li> <li>Foundations of Math 12 or Pre-Calculus 12 (67%) or equivalent</li> <li>Biology 12 (67%) or equivalent</li> <li>Chemistry 12 (67%) or equivalent</li> <li>Physics 11 (67%) or equivalent</li> </ul> <p><b>Competitive admission</b></p>	<ul style="list-style-type: none"> <li>Mechanical Ventilation</li> <li>Patient Assessment</li> <li>Anesthesia</li> <li>Assessment and Interventions in Multisystem Disorders</li> <li>General Pathophysiology</li> </ul>	<ul style="list-style-type: none"> <li>Respiratory Therapist</li> <li>Radiological Technologist</li> <li>Health Sciences Educator</li> <li>Clinical Education/ Application Specialist</li> </ul>

# LAW AND JUSTICE



PROGRAM NAME	MINIMUM REQUIREMENTS	SAMPLE COURSES	SAMPLE JOBS
<p><b>Law – Juris Doctor</b></p> <p>Obtain a dynamic legal education with a three-year, full-time Juris Doctor degree program. Understand law, master the realities of practice and be prepared to serve the profession of law and the interests of justice. Opportunities include competitive mooting, an international law journal, a legal information service and student-run initiatives.</p> <p><a href="http://tru.ca/law">tru.ca/law</a></p>	<ul style="list-style-type: none"> <li>A bachelor's degree</li> <li>LSAT score</li> <li>Personal statement</li> <li>3 references</li> <li>IELTS 7.0, no section below 7.0 or equivalent</li> </ul> <p><b>Competitive admission</b> <b>Application Deadline</b> February 1</p>	<ul style="list-style-type: none"> <li>Advanced Legal Research</li> <li>Ethical Lawyering</li> <li>Alternate Dispute Resolution</li> <li>Evidence</li> <li>Civil Procedure</li> </ul>	<ul style="list-style-type: none"> <li>Research Lawyer</li> <li>Public Defender</li> <li>Judge</li> <li>Contract Negotiator</li> <li>Plaintiff Attorney</li> <li>Corporate Lawyer</li> </ul>
<p><b>Police &amp; Justice Studies Diploma</b></p> <p>This two-year program will prepare you for the challenges of a career in policing, as well as in corrections, parole, customs, and other government services at the federal, provincial or municipal levels. Your diploma credits count towards completion of an arts, business or criminology degree.</p> <p><a href="http://tru.ca/pjs">tru.ca/pjs</a></p>	<ul style="list-style-type: none"> <li>All English 12 (73%) or IELTS 6.5, or equivalent</li> <li>Any Math 11</li> <li>Statement of Career Objectives</li> <li>Resumé</li> </ul> <p><b>Limited seats</b></p>	<ul style="list-style-type: none"> <li>Human Behaviour</li> <li>Conditioning</li> <li>Tactical Communication Skills for Criminal Justice</li> <li>Introduction to Criminal Justice Services in Canada</li> <li>Police Skills</li> </ul>	<ul style="list-style-type: none"> <li>Police Officer</li> <li>Bylaw Enforcement Officer</li> <li>Commercial Vehicle Enforcement Officer</li> <li>Criminologist</li> <li>Federal Air Marshal</li> </ul>

# SCIENCE AND COMPUTING SCIENCE



PROGRAM NAME	MINIMUM REQUIREMENTS	SAMPLE COURSES	SAMPLE JOBS
<p><b>Master of Science in Data Science</b></p> <p>Designed to provide students with solid knowledge, techniques, and experience in the research and applications of data science, and to prepare students to become researchers and leaders in the emerging area of applied research and application at the regional, national, and global levels. Prospective students are expected to demonstrate working knowledge of statistics, data structures and algorithms, databases and R/Python software packages. Preference will be given to students who have specialized in the area of statistics, computing science, mathematics and engineering.</p> <p><a href="http://tru.ca/mscnds">tru.ca/mscnds</a></p>	<ul style="list-style-type: none"> <li>3 or 4-year undergraduate degree in a related discipline or equivalent (min GPA 3.0 for project option or 3.33 for thesis option on a scale of 4.33 in the last 60 credits)</li> <li>ELTS 6.5, no section below 6.0 or equivalent</li> <li>2 references (TRU to provide forms)</li> <li>Knowledge Mapping Form strongly recommended</li> </ul>	<ul style="list-style-type: none"> <li>Advanced Modelling Techniques</li> <li>Advanced Optimization Methods</li> <li>Applied Statistics in Data Mining</li> <li>Exploratory Data Analysis and Data Visualization</li> </ul>	<ul style="list-style-type: none"> <li>Business Intelligence Reporting Professional</li> <li>Statistician</li> <li>Data Analyst</li> <li>Data Mining or Big Data Engineer</li> <li>Program/Project Manager</li> </ul>
<p><b>Master of Science in Environmental Science</b></p> <p>Designed to produce graduates who are innovative and have multi-disciplinary skills and broad knowledge in the field of environmental science. It is structured to be unique, flexible and relevant.</p> <p><a href="http://tru.ca/science/masters-degrees/msces">tru.ca/science/masters-degrees/msces</a></p>	<ul style="list-style-type: none"> <li><b>Must have a TRU thesis supervisor before you apply</b></li> <li>3 or 4-year undergraduate degree or equivalent (min GPA 3.33 on a scale of 4.33 in the last 60 credits) Lower GPA may be considered for applicants with related field experience</li> <li>ELTS 6.5, no section below 6.0 or equivalent</li> <li>Résumé and letter of intent</li> </ul>	<ul style="list-style-type: none"> <li>Environmental Science: History, Philosophy, and Concepts</li> <li>Environmental Science: Conducting Science</li> <li>Thesis: Master's Thesis</li> </ul>	<ul style="list-style-type: none"> <li>Environmental Policy Director</li> <li>Project Manager</li> <li>Environmental Coordinator</li> </ul>
<p><b>Post-Baccalaureate Diploma in Applied Data Science</b></p> <p>Program description: Develop strong analytical, technical, and professional skills and foundations in the principles and practice of Mathematics, Statistics, and related Computing technologies. These skill sets will help open career opportunities in the field of Applied Data Science and Data Analytics.</p> <p><a href="http://tru.ca/programs">tru.ca/programs</a></p>	<ul style="list-style-type: none"> <li>3 or 4-year undergraduate degree in any discipline, with a minimum 3.00 GPA on scale of 4.0 in last 60 credits</li> <li>All English 12 (73%) or IELTS 6.5, or equivalent</li> </ul>	<ul style="list-style-type: none"> <li>Introduction to applied data science with Python</li> <li>Artificial intelligence</li> <li>Data mining</li> </ul>	<ul style="list-style-type: none"> <li>Data Analyst</li> <li>Business Analyst</li> <li>Data and Analytics Manager</li> <li>Database Administrator</li> </ul>

<p><b>Bachelor of Computing Science</b></p> <p>Explore a career in the technology industry—software and hardware design, system architecture, operating system structure and modeling and simulation. The BCS degree consists of two years of general study followed by two years of concentrated computing studies. Double degree option with Business Administration is available.</p> <p><b>tru.ca/compsci</b></p>	<ul style="list-style-type: none"> <li>All English 12 (73%) or IELTS 6.5, or equivalent</li> <li>Pre-Calculus 12 or Math 12 (67%) or equivalent</li> </ul>	<ul style="list-style-type: none"> <li>Discrete Structures</li> <li>Computer Network Security</li> <li>Software Engineering</li> <li>Advanced Web Design and Programming</li> <li>Artificial Intelligence</li> </ul>	<ul style="list-style-type: none"> <li>Web, Design, and Integration Developer</li> <li>Project Manager</li> <li>Mobile Application Developer</li> <li>Computer Programmer</li> </ul>
<p><b>Bachelor of Science</b></p> <p>Enjoy both depth and breadth in your science education. The rigorous BSc program offers opportunities for practical experience, Co-op, undergraduate research and mentorship by internationally recognized faculty researchers across a spectrum of disciplines.</p> <p><b>Majors:</b> Animal Biology, Biology, Cellular, Chemical Biology, Chemistry, Computing Science, Computing Science &amp; Mathematics, Data Science, Ecology &amp; Environmental Biology, Environmental Chemistry, General Science, Mathematics, Mathematics &amp; Economics, Molecular &amp; Microbial Biology, Physics, Pre-professional Health Science</p> <p><b>Minors:</b> Environmental Economics &amp; Sustainability, Management</p> <p><b>tru.ca/bsc</b></p>	<ul style="list-style-type: none"> <li>All English 12 (73%) or IELTS 6.5, or equivalent</li> <li>Pre-Calculus 12 (67%) or equivalent</li> <li>Biology 11 or 12 (67%) or equivalent. Not required for majors in computing, math, or physics.</li> <li>Chemistry 11 or 12, or equivalent</li> <li>Physics 11 or 12, or equivalent</li> </ul> <p><b>Upgrading available while in the program</b></p>	<ul style="list-style-type: none"> <li>Cell Biology</li> <li>Inorganic Chemistry</li> <li>Numerical Analysis</li> <li>Relativity and Quanta</li> <li>Sustainable Economic Development</li> </ul>	<ul style="list-style-type: none"> <li>Lab Technologist</li> <li>Computing Analyst</li> <li>Project Manager</li> <li>Scientific Writer</li> <li>Technical Manager</li> </ul>
<p><b>Bachelor of Engineering in Software Engineering</b></p> <p>If you want to be a professional with the technical knowledge and skills to design, develop, test and maintain problem-solving software by applying systematic engineering principles, a software engineering degree is the right choice. Join the fastest growing and in-demand profession to be part of teams producing software-enabled products of high technical complexity.</p> <p><b>tru.ca/se</b></p>	<ul style="list-style-type: none"> <li>All English 12 (73%) or IELTS 6.5, or equivalent</li> <li>Pre-Calculus 12 (67%) or equivalent</li> <li>Chemistry 11 (67%) or equivalent</li> <li>Physics 11 (67%) or equivalent</li> </ul> <p><b>Limited seats</b></p>	<ul style="list-style-type: none"> <li>Software Engineering Design: Process &amp; Principles</li> <li>Software Design Pattern</li> <li>Software Quality Engineering</li> </ul>	<ul style="list-style-type: none"> <li>Software Application Development</li> <li>Software Testing</li> <li>Software Design</li> <li>Database Management</li> <li>Network Management and Operations</li> <li>Security Analysis and Protection</li> </ul>
<p><b>Bachelor of Engineering in Computer Engineering</b></p> <p>The computer engineering program at Thompson Rivers University is your gateway to a dynamic and exciting career in technology. Our program equips you with the knowledge and skills to become a proficient computer engineer that's ready to tackle real-world challenges.</p>	<ul style="list-style-type: none"> <li>All English 12 (73%) or IELTS 6.5, or equivalent</li> <li>Pre-Calculus 12 (67%) or equivalent</li> <li>Chemistry 11 (67%) or equivalent</li> <li>Physics 11 (67%) or equivalent</li> </ul> <p><b>Limited seats</b></p>	<ul style="list-style-type: none"> <li>Computer System Design</li> <li>Algorithms &amp; Data Structures</li> <li>Digital and Semiconductor Electronics</li> <li>Introduction into Robotics</li> </ul>	<ul style="list-style-type: none"> <li>Sample Jobs</li> <li>Embedded systems engineer</li> <li>Hardware design engineer</li> <li>Network engineer</li> <li>Autonomous system design engineer</li> <li>Robotics engineer</li> <li>Digital system design engineer</li> </ul>



<p><b>Bachelor of Natural Resource Science</b></p> <p>Gain a broad and in-depth understanding of natural resources, including not only biology, ecology and scientific method, but sector-specific resource management for forestry, fisheries, range and recreation. The BNRS program provides hands-on learning in the field and opportunities for undergraduate research and study abroad.</p> <p><b>Minor:</b> Environmental Economics &amp; Sustainable Development</p> <p><b>tru.ca/bnrs</b></p>	<ul style="list-style-type: none"> <li>All English 12 (73%) or IELTS 6.5, or equivalent</li> <li>Pre-Calculus 12 (67%) or equivalent</li> <li>Biology 11 (67%) or equivalent</li> <li>Chemistry 11, or equivalent</li> </ul> <p><b>Competitive admission</b></p>	<ul style="list-style-type: none"> <li>Biometrics</li> <li>Natural Resource Pathology</li> <li>Forest Economics</li> <li>Chemical Bonding and Organic Chemistry</li> </ul>	<ul style="list-style-type: none"> <li>Fisheries Researcher</li> <li>Forestry Interpreter and Guide</li> <li>Wildlife Biology Researcher</li> <li>Range Manager</li> <li>Ecology and Land Manager</li> </ul>
<p><b>Computing Science Diploma</b></p> <p>Become proficient in the application of computers to solve business-related problems. Develop your technical and computer skills in combination with communication and business skills. Your diploma credits count towards completion of the Bachelor of Computing Science degree.</p> <p><b>tru.ca/compsci</b></p>	<ul style="list-style-type: none"> <li>All English 12 (73%) or IELTS 6.5, or equivalent</li> <li>Pre-Calculus 12 or Math 12 (67%) or equivalent</li> </ul> <p><b>Limited seats</b></p>	<ul style="list-style-type: none"> <li>Mathematics for Computing Science</li> <li>Website Design and Development</li> <li>Database Systems</li> <li>Computer Programming</li> </ul>	<ul style="list-style-type: none"> <li>Multimedia Developer</li> <li>Game Developer</li> <li>Human Computer Interface Designer</li> <li>Network and Telecommunication System Administrator</li> </ul>
<p><b>Regenerative Agriculture Diploma</b></p> <p>The first of its kind in British Columbia, this program offers practical experience on your choice of farms or ranches, focusing on multiple enterprises from livestock to diverse crops. It integrates business management with regenerative agriculture practices, preparing participants to successfully manage a resilient agricultural business globally.</p> <p><b>tru.ca/ranching</b></p>	<ul style="list-style-type: none"> <li>All English 12, or IELTS 6.5, or equivalent</li> <li>A good working knowledge of Microsoft Word and Excel</li> <li>Two letters of reference</li> </ul>	<ul style="list-style-type: none"> <li>Business Strategy</li> <li>Agriculture Marketing</li> <li>Riparian Management</li> <li>Range Ecology</li> <li>Stockmanship</li> <li>Enterprise Diversification</li> <li>Beef Production</li> <li>Sheep Production</li> <li>Agri-tourism</li> </ul>	<ul style="list-style-type: none"> <li>Farm or Ranch Manager</li> <li>Range and Land Use Manager</li> <li>Commercial Account Manager</li> <li>Economic Development Officer</li> <li>Community Development Consultant</li> <li>Agriculture Producer or Entrepreneur</li> </ul>
<p><b>Architectural &amp; Engineering Technology Diploma (ARET)</b></p> <p>The ARET program emphasizes the design processes in building, civil and mechanical technologies, involving design projects for building structures, subdivisions, municipal services, and electrical, plumbing, lighting and HVAC systems.</p> <p><b>tru.ca/aret</b></p>	<ul style="list-style-type: none"> <li>All English 12 (73%) or IELTS 6.5, or equivalent</li> <li>Math 12 (67%) or equivalent</li> <li>Physics 11, or equivalent</li> </ul> <p><b>Limited seats</b></p>	<ul style="list-style-type: none"> <li>Computer Aided Design and Drafting</li> <li>Building Electrical Design</li> <li>Site Planning and Development</li> <li>Fluid Mechanics</li> </ul>	<ul style="list-style-type: none"> <li>Building Technologist</li> <li>Civil Technologist</li> <li>Architectural Designer</li> <li>Mechanical Technologist</li> </ul>
<p><b>Engineering Transfer (Year 1)</b></p> <p>Get started on your engineering degree at TRU by taking one year of general study courses that are common to all engineering disciplines. This program transfers into the second year of a full engineering program at either the University of British Columbia or the University of Victoria, or stay at TRU to complete Year 2, Electrical or Computer for entry into third year at UVic.</p> <p><b>tru.ca/et</b></p>	<ul style="list-style-type: none"> <li>All English 12 (73%) or IELTS 6.5, or equivalent</li> <li>Pre-Calculus 12 (73%) or equivalent</li> <li>Chemistry 12 (73%) or equivalent</li> <li>Physics 12 (73%) or equivalent</li> </ul> <p><b>Competitive admission</b> <b>Application Deadline</b> March 1</p>	<ul style="list-style-type: none"> <li>Principles of Software Development</li> <li>Engineering Graphics</li> <li>Linear Algebra for Engineers</li> <li>Principles of Chemistry</li> <li>Physics for Engineers</li> </ul>	<ul style="list-style-type: none"> <li>Chemical Engineer</li> <li>Civil Engineer</li> <li>Mechanical Engineer</li> <li>Electrical Engineer</li> <li>Computer Engineer</li> </ul>
<p><b>Engineering Transfer (Year 2, Electrical or Computer)</b></p> <p>Complete second-year engineering courses in either electrical or computer engineering, plus a four- to eight-month Co-op term. Study circuit analysis and digital electronics, design and test microcontroller circuits and learn to control various mechanical systems. Transfers to the third-year electrical or computing stream at the University of Victoria.</p> <p><b>tru.ca/et</b></p>	<ul style="list-style-type: none"> <li>Completion of first year of the Engineering Transfer Program at TRU (38 credits) with a cumulative grade point average of 2.50</li> <li>A minimum grade of C- or better in all courses that are part of the first-year transfer program.</li> </ul> <p><b>Competitive admission</b> <b>Application Deadline</b> March 1</p>	<ul style="list-style-type: none"> <li>Circuit Analysis</li> <li>Differential Equations</li> <li>Calculus</li> <li>Digital Electronics</li> <li>Electrical Properties of Materials</li> <li>Computer Programming</li> </ul>	<ul style="list-style-type: none"> <li>Electrical Engineer</li> <li>Computer Engineer</li> <li>Aerospace Engineer</li> <li>Biomedical Engineer</li> <li>Software Engineer</li> </ul>

# TRADES AND TECHNOLOGY

LEARN MORE ▶



PROGRAM NAME	MINIMUM REQUIREMENTS	SAMPLE COURSES	SAMPLE JOBS
<p><b>Horticulture</b></p> <p>This program contributes to the knowledge and experience required to create and preserve sustainable urban environments while pursuing careers in landscape design, installation and maintenance, either as an independent entrepreneur or within a horticulture business or municipal parks department.</p> <p><a href="http://tru.ca/horticulture">tru.ca/horticulture</a></p>	<ul style="list-style-type: none"> <li>All English 12 (73%) or IELTS 6.5, or equivalent</li> <li>Math 11 (60%) or equivalent</li> </ul> <p><b>Limited seats</b></p>	<ul style="list-style-type: none"> <li>Greenhouse Production</li> <li>Soil Science</li> <li>Landscaping</li> <li>Nursery Production and Retailing</li> <li>Turfgrass Management</li> </ul>	<ul style="list-style-type: none"> <li>Landscaping</li> <li>Nurseries</li> <li>Garden centres</li> <li>Municipal parks</li> <li>Commercial greenhouses</li> <li>Orchards</li> <li>Golf courses</li> </ul>
<p><b>Power Engineering Technology Diploma</b></p> <p>As power engineers, graduates will maintain and operate heating and power plants, refrigeration systems and auxiliary equipment like pumps, compressors, steam turbines, electrical generators, cooling towers and water treatment systems.</p> <p><a href="http://tru.ca/powereng">tru.ca/powereng</a></p>	<ul style="list-style-type: none"> <li>All English 12, or IELTS 6.5, or equivalent</li> <li>Math 12 with 67%</li> <li>Recommended: Physics 11</li> </ul>	<ul style="list-style-type: none"> <li>Safety and Environment</li> <li>Welding and Piping</li> <li>Electricity and Instrumentation</li> <li>Refrigeration Systems</li> <li>Plant Boiler Simulation</li> </ul>	<ul style="list-style-type: none"> <li>Power Engineer</li> <li>Construction Millwright</li> <li>Industrial Mechanic</li> <li>Power Systems Operator</li> <li>1300 job openings 2020-2030</li> </ul>
<p><b>Water and Wastewater Technology Diploma</b></p> <p>Develop marketable expertise in the operation and maintenance of water and wastewater treatment, distribution, re-use and disposal facilities and in monitoring source water quality. This state-of-the-art program encompasses chemistry, microbiology, math, mechanical and electrical systems, instrumentation and treatment technologies as they are applied in the increasingly vital water industry.</p> <p><a href="http://tru.ca/water">tru.ca/water</a></p>	<ul style="list-style-type: none"> <li>All English 12, or IELTS 6.5, or equivalent</li> <li>Math 11, or equivalent</li> <li>Recommended: Chemistry 11, or equivalent and Biology 11, or equivalent</li> </ul> <p><b>Limited seats</b></p>	<ul style="list-style-type: none"> <li>Microbiology and Toxicology</li> <li>Management and Leadership Skills</li> <li>Source Water Protection Management</li> <li>Wastewater Utility</li> <li>Mechanical Systems</li> </ul>	<ul style="list-style-type: none"> <li>Hazardous Materials Specialist</li> <li>Water Quality Technician</li> <li>Municipal Water and Wastewater Quality Technician</li> </ul>
<p><b>Water and Wastewater Utilities Certificate</b></p> <p>Learn to effectively operate and maintain water and wastewater treatment, distribution and collection systems and start your career in an in-demand trade with this entry-level eight-month program. Your certificate credits count towards the Water and Wastewater Technology diploma program.</p> <p><a href="http://tru.ca/water">tru.ca/water</a></p>	<ul style="list-style-type: none"> <li>All English 12, or IELTS 6.5, or equivalent</li> <li>Recommended: Math 11, or equivalent, Chemistry 11, or equivalent and Biology 11, or equivalent</li> </ul>	<ul style="list-style-type: none"> <li>Filtration</li> <li>Coagulation and Particle Removal</li> <li>Water Chemistry</li> <li>Water Treatment</li> <li>Introduction to Wastewater</li> </ul>	<ul style="list-style-type: none"> <li>Lab Technician</li> <li>Wastewater Treatment Plant Operator</li> <li>Eco-toxicologist</li> <li>Landfill Engineer</li> </ul>

## Trades Foundation Programs

These programs give you the basic entry-level skills you need to start working in a trade and prepare for apprenticeship.

Automotive Service Technician, Carpenter, Diesel Engine Mechanic, Electrician, Electrical/Industrial Mechanic, Heavy Duty Equipment Technician, Instrumentation & Control Technician, Industrial Mechanic (Millwright) Machinist, Metal Fabricator, Plumber, Welder

21 – 36 weeks

**Red Seal:** Many trades allow you to earn extra certification so you can work across Canada.

[tru.ca/trades](http://tru.ca/trades)



## Hands on training

Carpentry students gain hands-on training experience building the award-winning YMCA Dream Home Training House project in Kamloops, in partnership with the Canadian Home Builders Association.

# HOW TO APPLY

Have questions? Speak with us today.  
**TRU.CA/CONNECT**



## 1 Choose your program and start date

Explore programs and start dates in our viewbook (pages 24-36)

Confirm specific admission requirements and deadlines for your selected program.

## 2 Apply

Submit your application online at [truworld.ca/apply](http://truworld.ca/apply)

### Attach documents

- Upload all necessary documents, including proof of English language proficiency and transcripts.
- High school students should include final Grade 11 and interim Grade 12 transcripts.
- If applicable, include post-secondary transcripts.

### Application fee

A non-refundable application fee of \$100 CAD must be paid at the time of application.

## 3 Receive your Conditional Letter of Acceptance (CLOA)

Upon meeting admission criteria, you will receive a pre-acceptance letter stating:

- The program to which you have been accepted.
- Any conditions tied to your acceptance.

### Processing time

- Undergraduate programs: 10–15 business days.
- Graduate programs: 4–6 Weeks.

## 4 Payment

Pay tuition deposits through PayMyTuition by bank transfer, debit, or credit card. [tru.ca/pay](http://tru.ca/pay)

## 5 Receive your Official Letter of Acceptance (LOA)

Once your tuition deposit is received and you agree to all outlined conditions, you will receive your Official Letter of Acceptance.



## 6 Your Provincial Attestation Letter (PAL)

If applicable, TRU will obtain your PAL from the Government of BC on your behalf. This PAL is required for your study permit application unless you are exempt.

## 7 Apply for your Canadian study permit with BorderPass

Apply for your study permit using your official letter of acceptance and PAL.

TRU partners with BorderPass to facilitate this process, offering access to expert Canadian immigration lawyers and advisory services at no additional cost. This partnership ensures you receive comprehensive support throughout your study permit application process, making it as smooth as possible.

[truworld.ca/borderpass](http://truworld.ca/borderpass)

### TRU Refund Rules

Students should familiarize themselves with TRU's refund rules prior to submitting payment for their studies. All new international TRU applicants should know that their first-semester tuition fees are non-refundable and non-transferable. After receiving the Letter of Acceptance, the applicant is expected to begin their studies at TRU.

Students withdrawing due to a failure to obtain a student permit prior to arrival at TRU will be entitled to a full refund of tuition and general fees invoiced, minus a \$200 CAD administration fee. Students must notify TRU in writing and provide documentation before the start of the semester. Processing time may take up to eight weeks. New students who wish to defer the start of their first semester of study to a future semester may do so only once and up to a maximum of one calendar year.



Have questions? Speak with us today.  
**TRU.CA/CONNECT**



- truworld
- truworld
- truworld
- tru.ca/videos
- truworld

#mytru  
[truworld.ca](http://truworld.ca)



EST.1970

805 TRU Way, Kamloops, BC, Canada V2C 0C8  
T: +1-250-828-5252

Inquiries: [tru.ca/justask](http://tru.ca/justask) | Applications: [truworld.ca/apply](http://truworld.ca/apply)